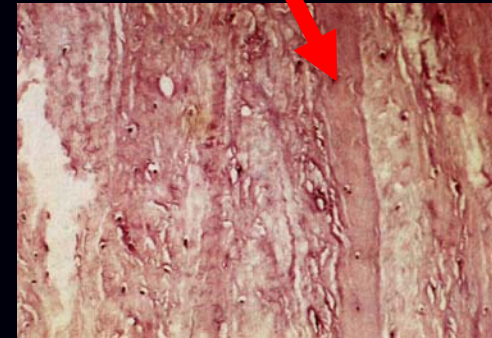
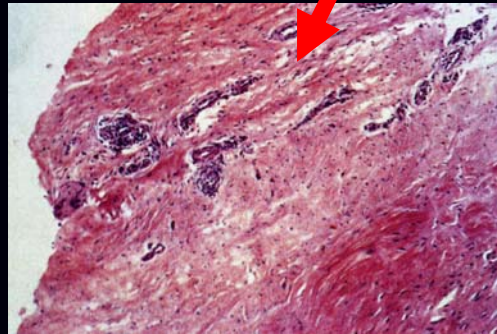
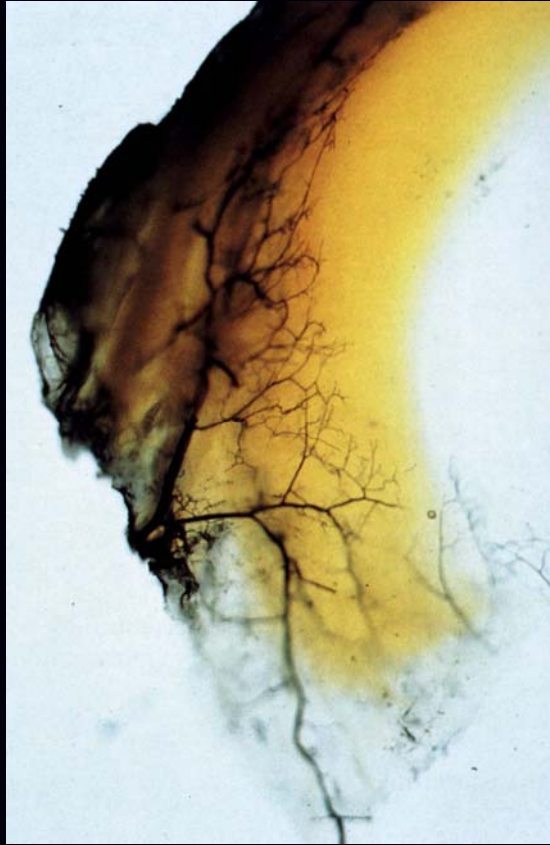


***GINOCCHIO***

[www.fisiokinesiterapia.biz](http://www.fisiokinesiterapia.biz)

# Anatomia

## Menischi



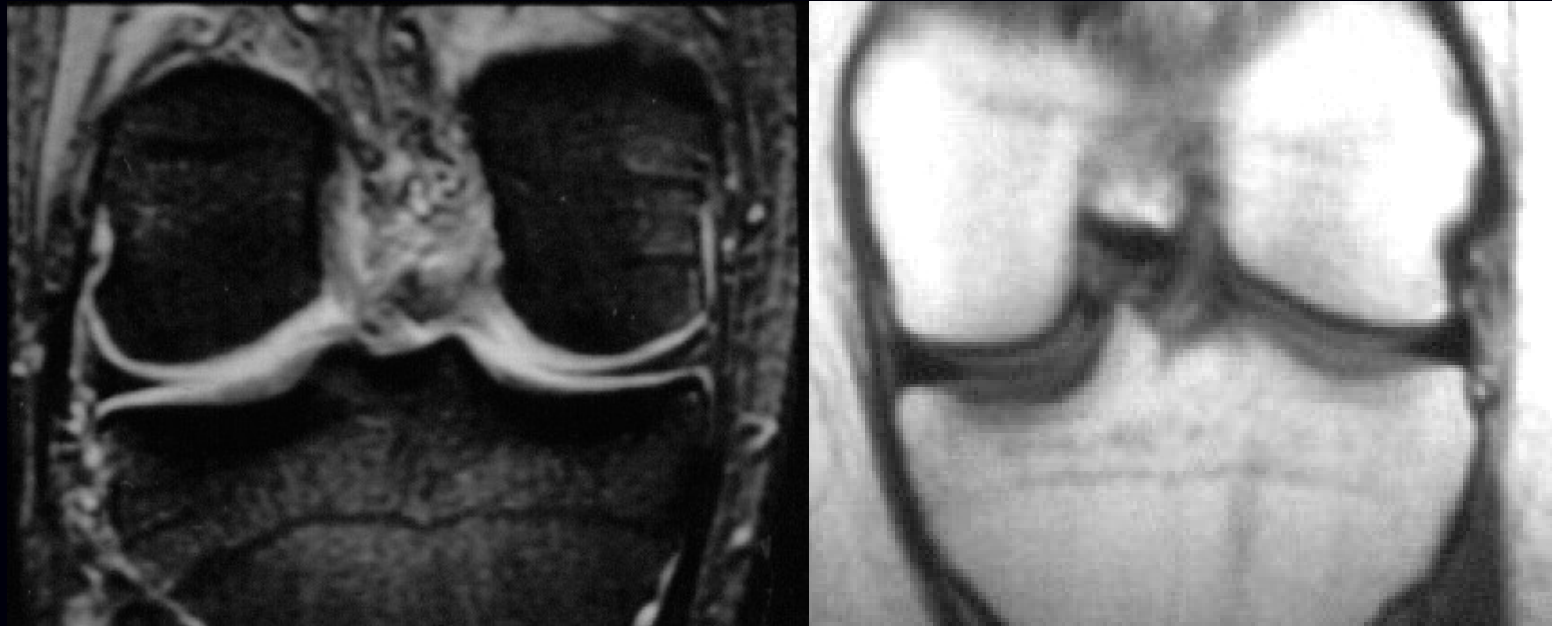
# Anatomia

## Menischi



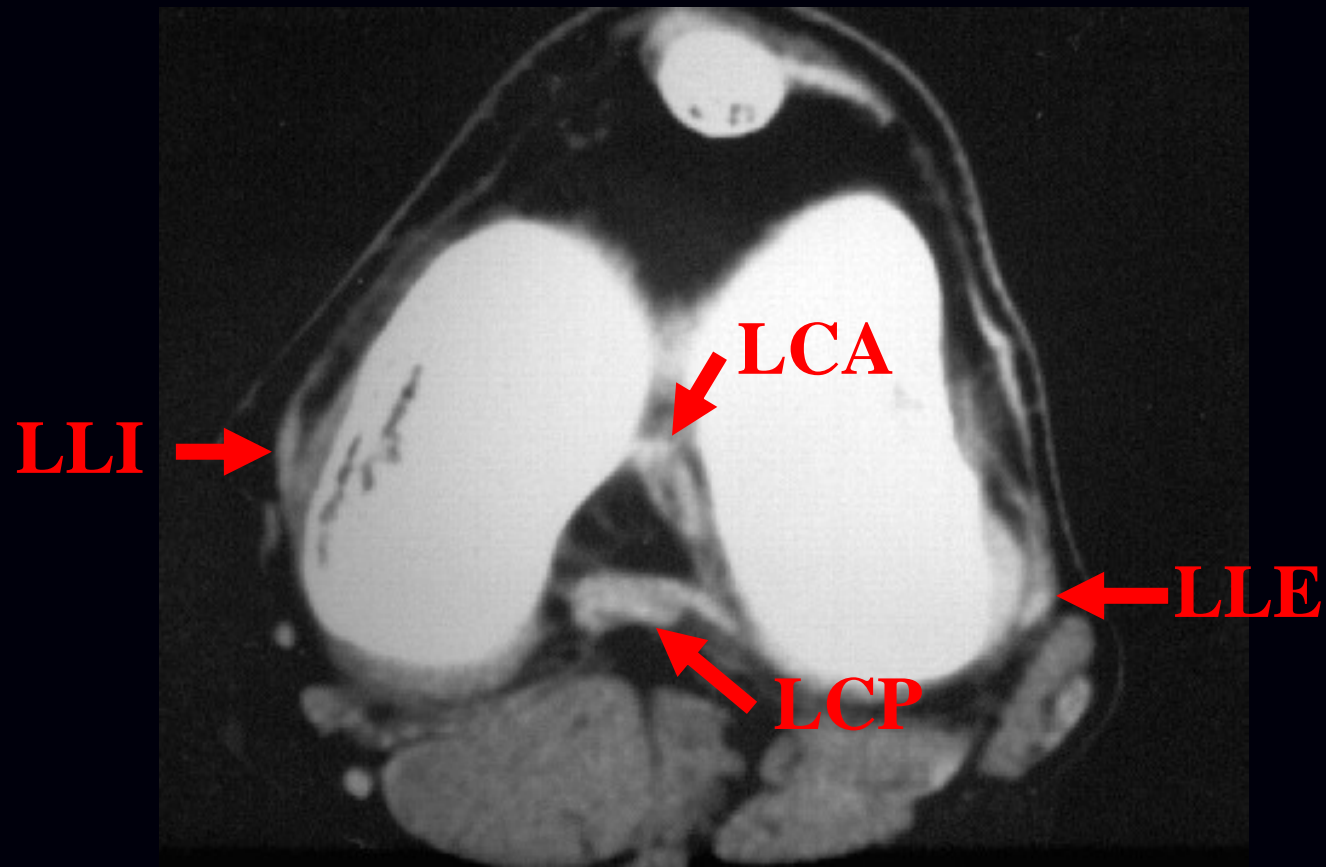
# Anatomia

## Menischi



# Anatomia

## Legamenti e punti d'angolo



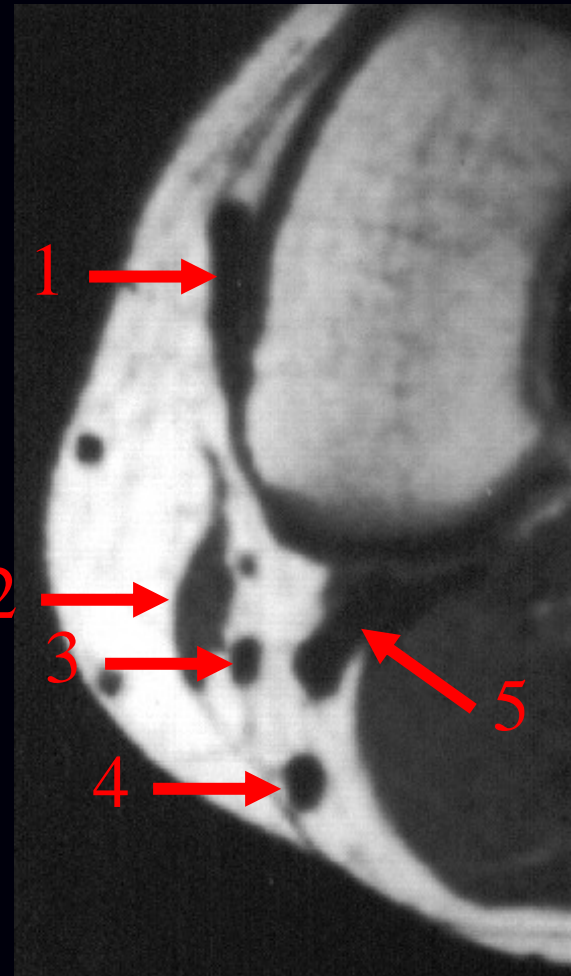
# Anatomia

## Legamenti e punti d'angolo

### P.A.P.I.

Menisco interno  
(corno posteriore)

1. LLI
2. Tendine sartorio
3. Tendine gracile
4. Tendine semitendinoso
5. Tendine semimembranoso



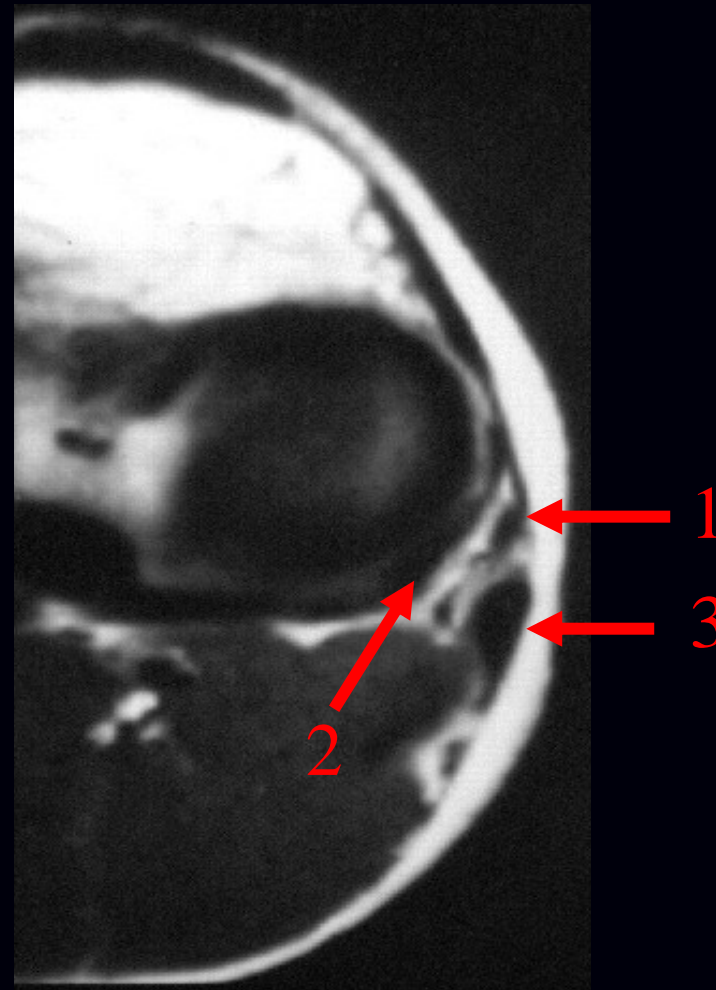
# Anatomia

## Legamenti e punti d'angolo

### P.A.P.E.

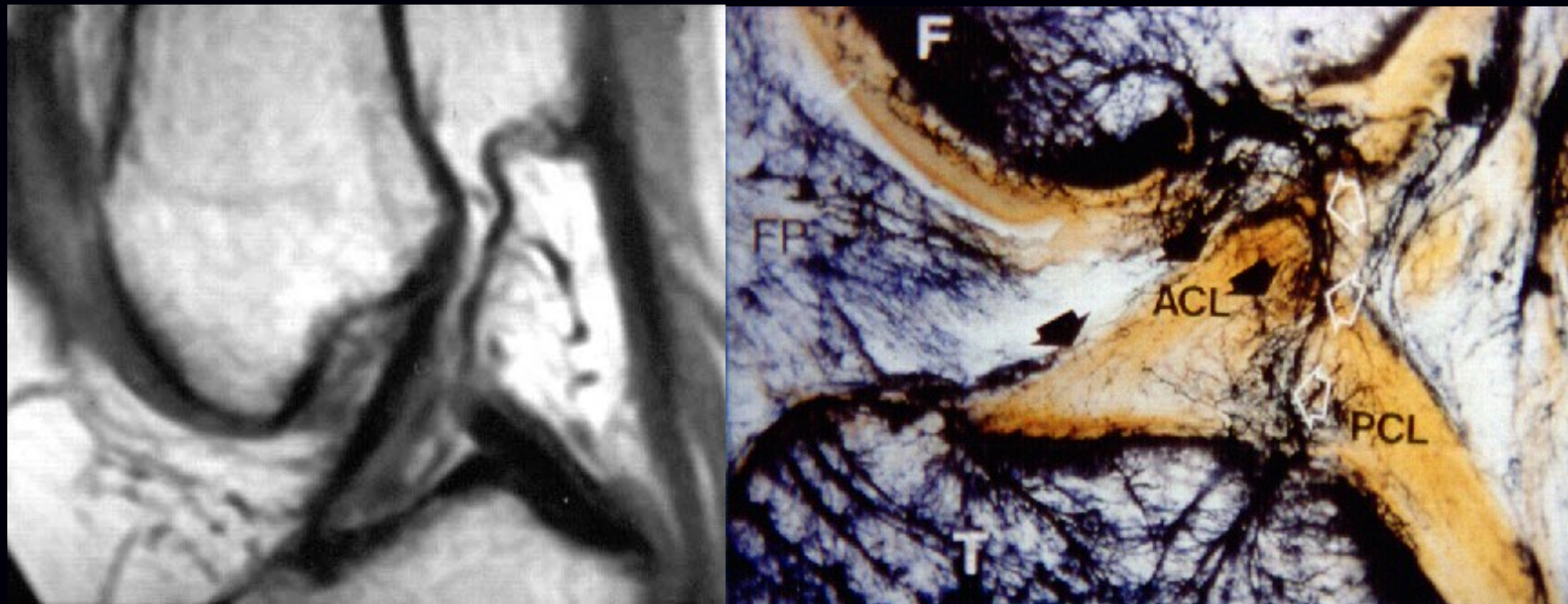
Menisco esterno  
(corno posteriore)

1. LLE
2. Tendine popliteo
3. Tendine bicipite



# Anatomia

## Pivot





# Patologia

- ✓ Patologia meniscale
- ✓ Patologia legamentosa
- ✓ Patologia sinoviale
- ✓ Patologia osteocondrale

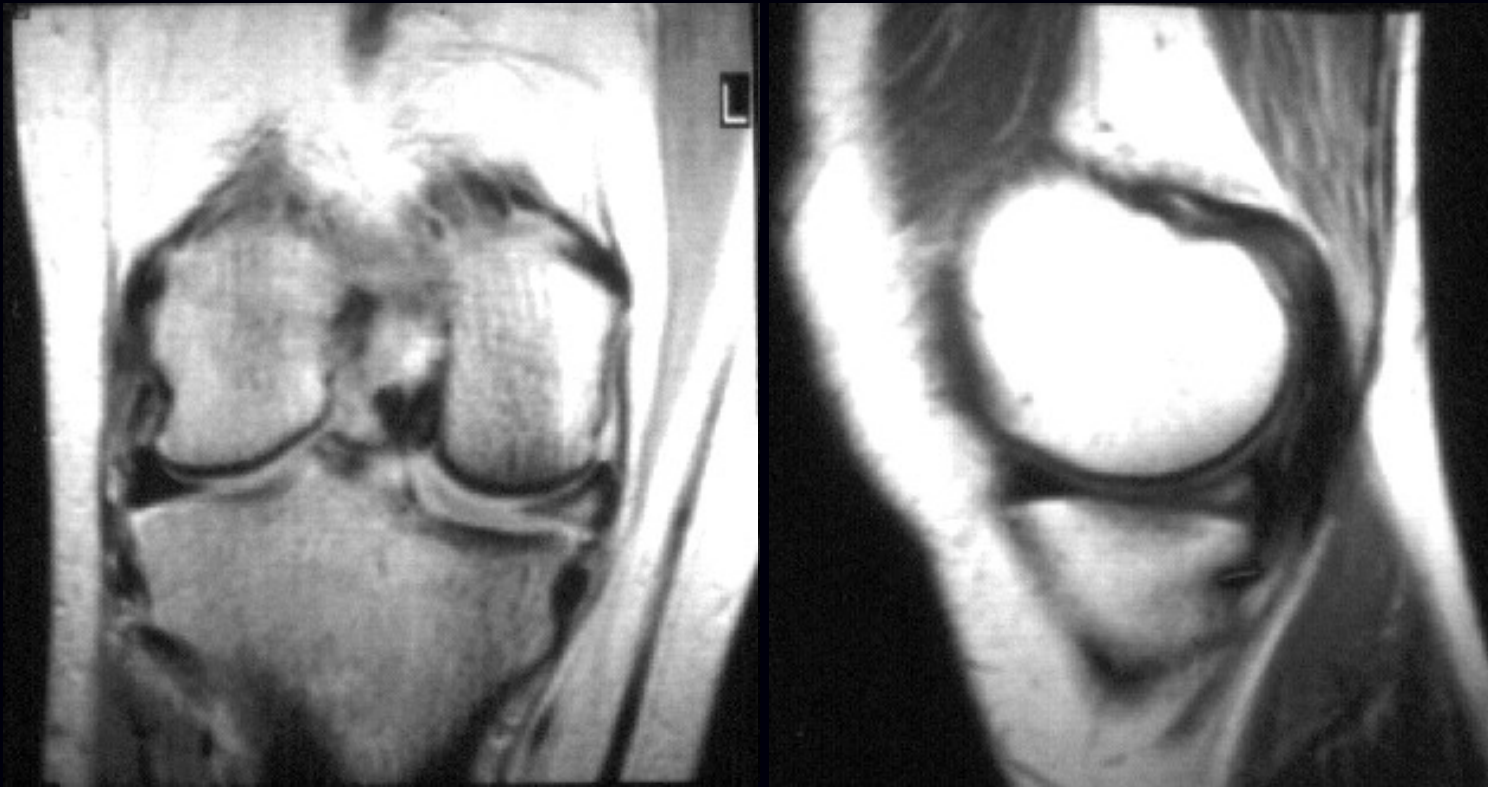
# Patologia

## Menischi

- ✓ Patologia degenerativa
- ✓ Patologia traumatica
- ✓ Patologia displasica

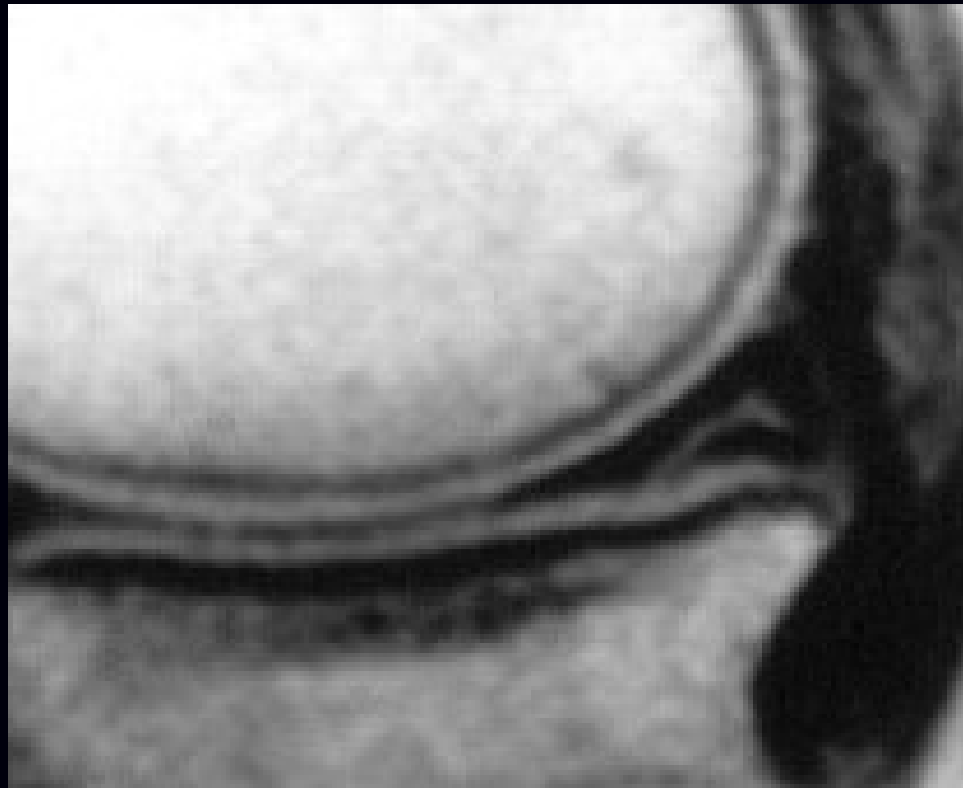
# Patologia

Menischi: patologia degenerativa



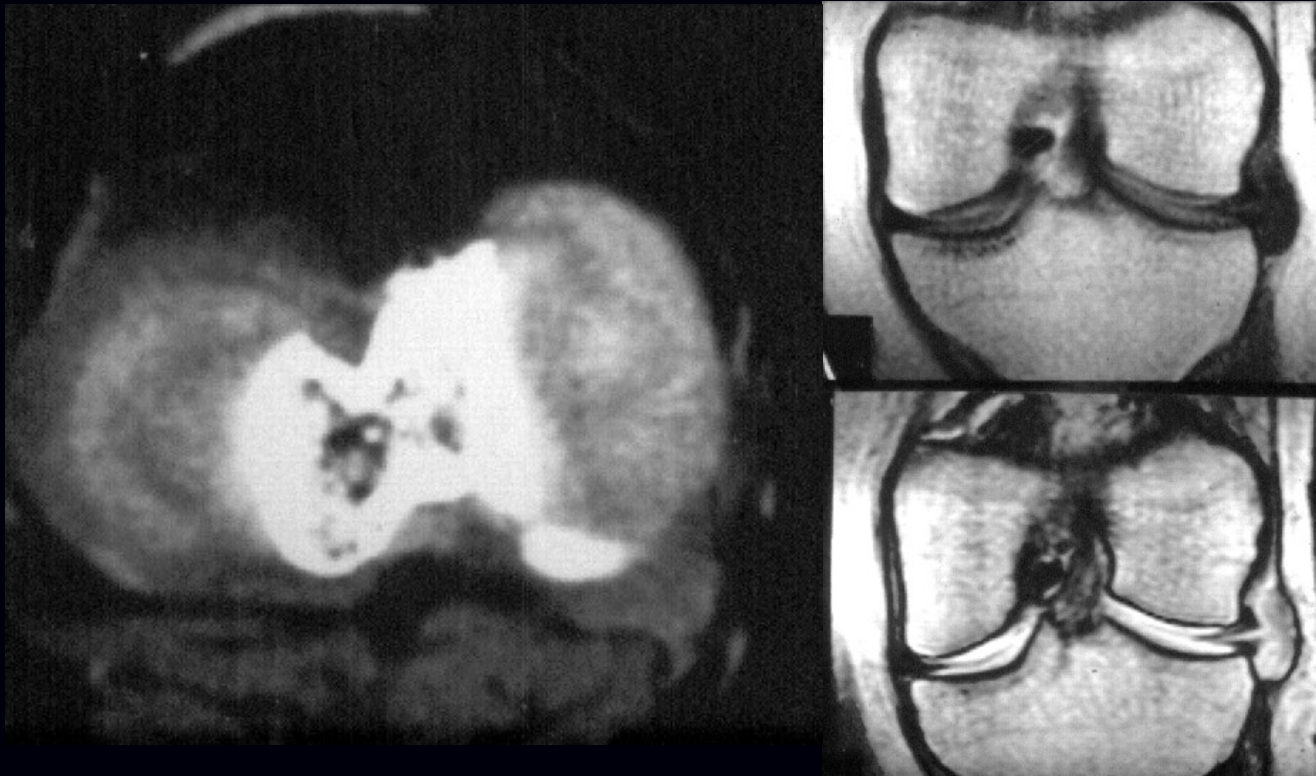
# Patologia

Menischi: patologia degenerativa



# Patologia

Menischi: patologia degenerativa



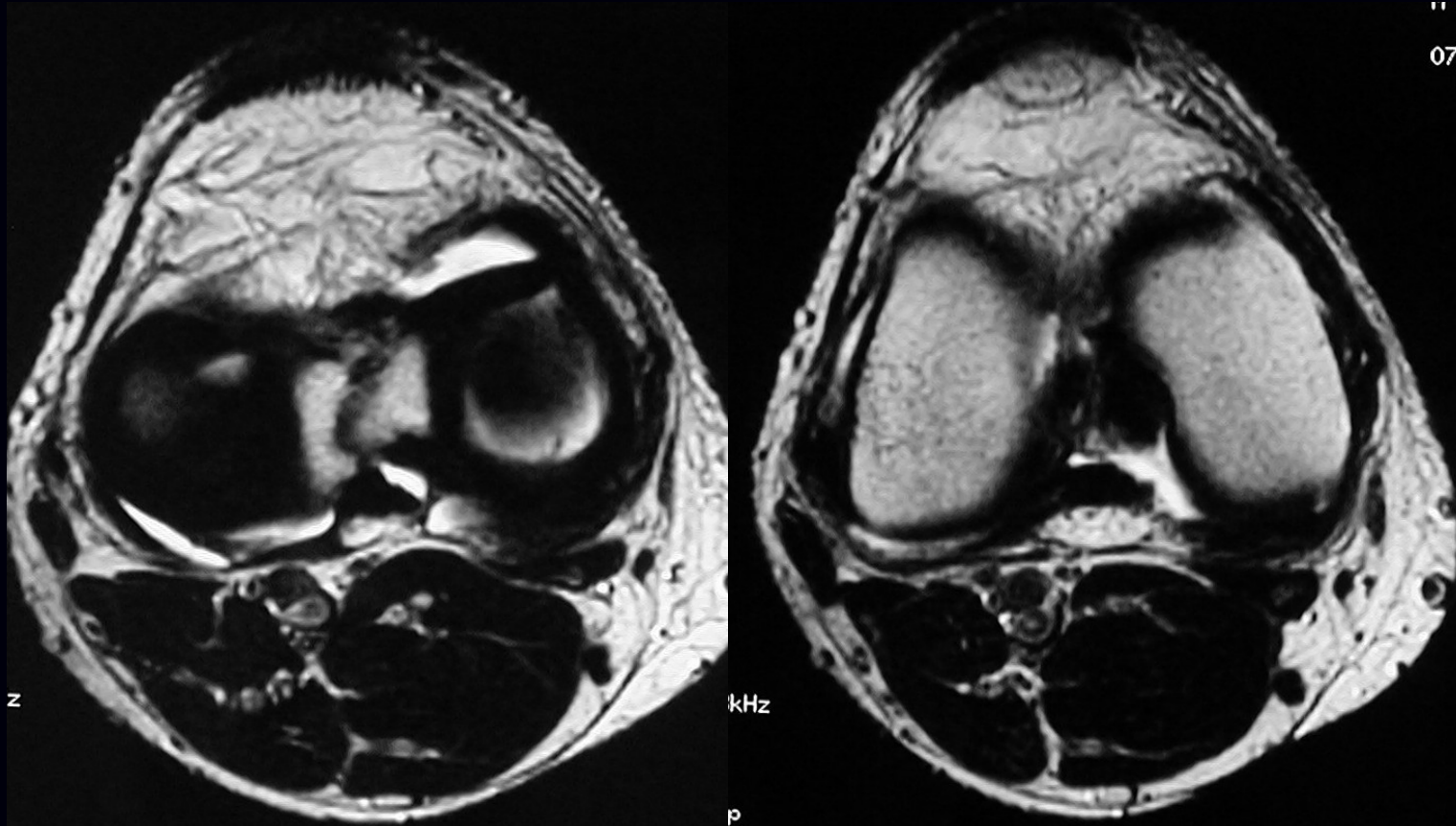
# Patologia

Menischi: patologia traumatica



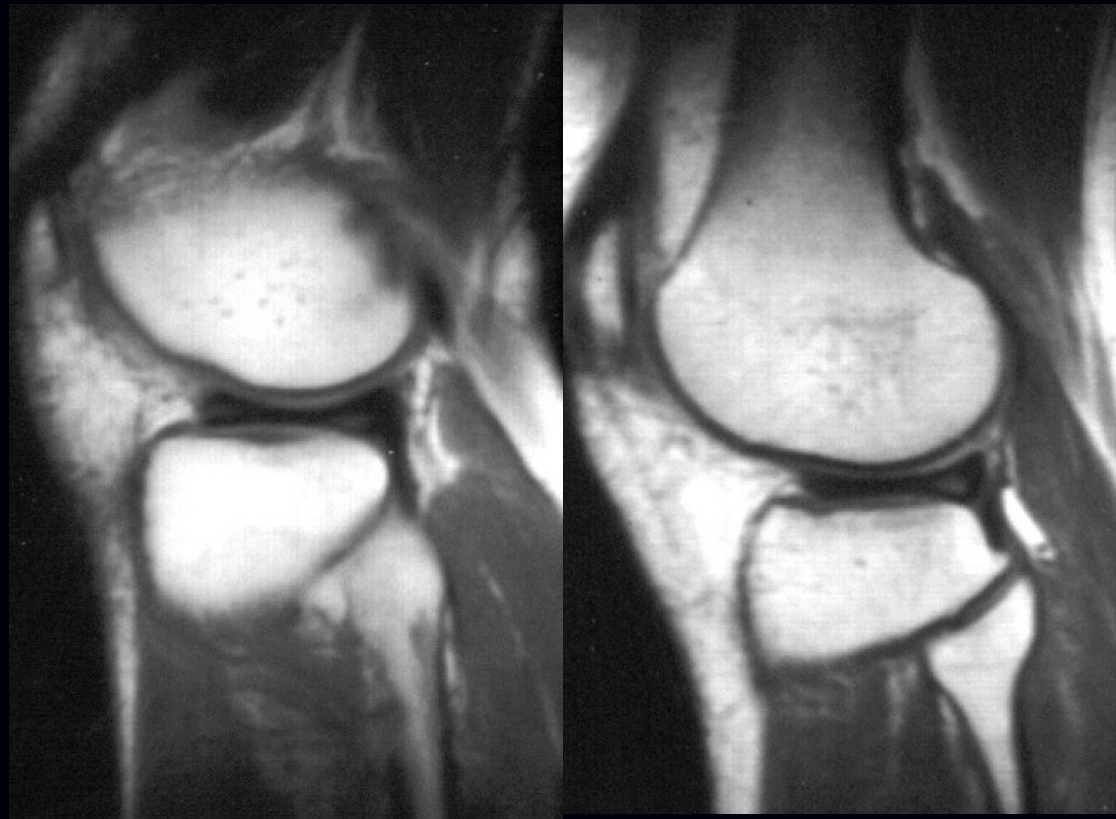
# Patologia

## Menischi: patologia traumatica



# Patologia

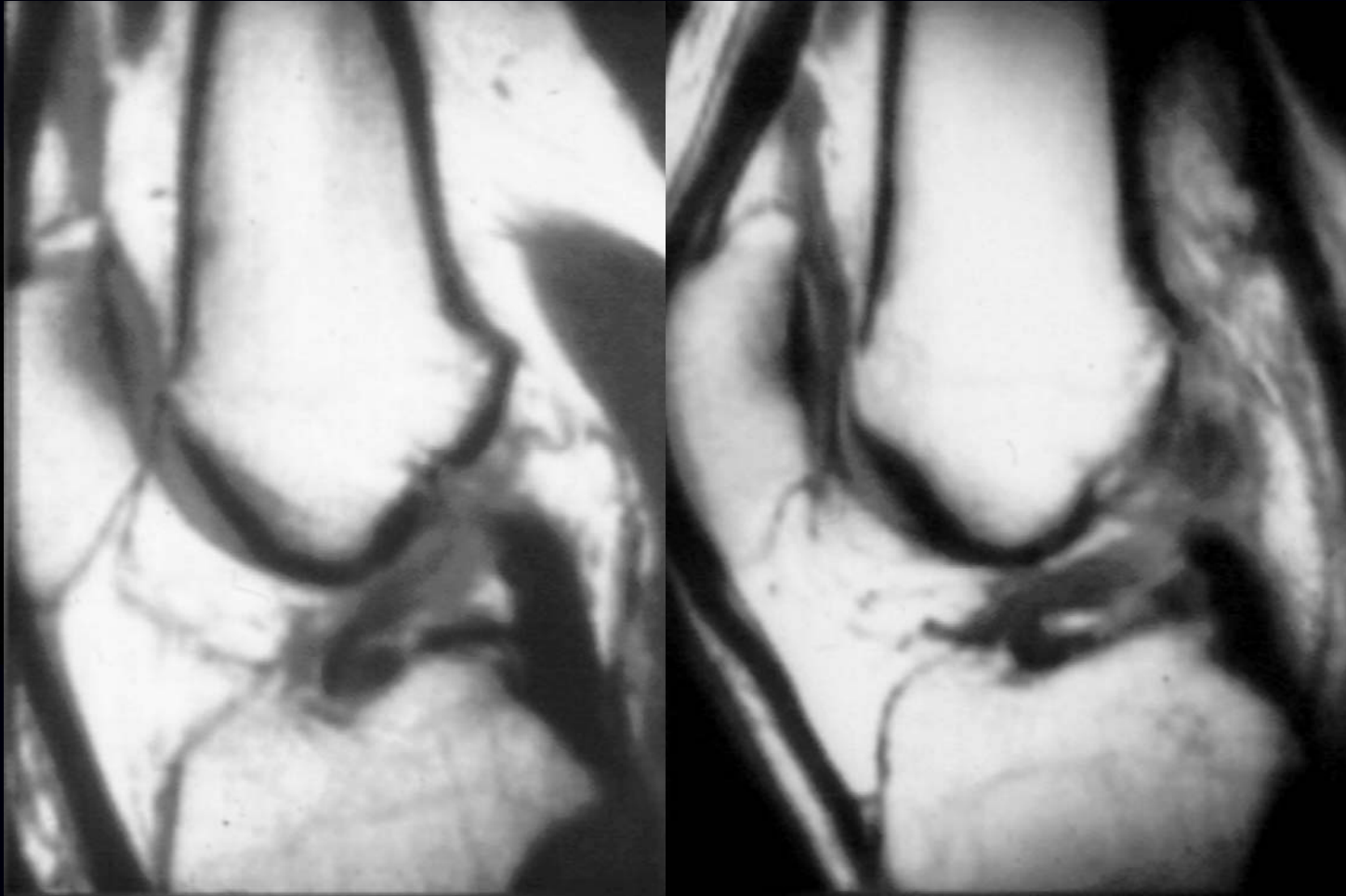
Menischi: patologia displasica





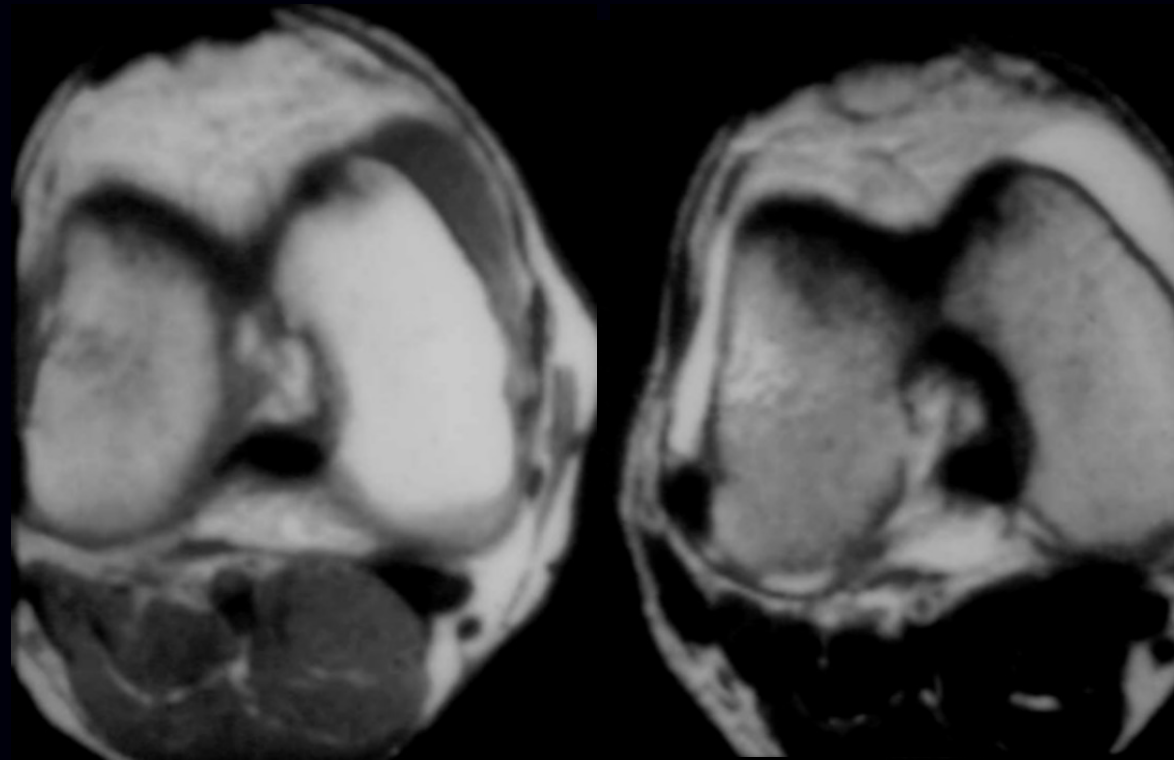
# Patologia

## Legamenti: pivot



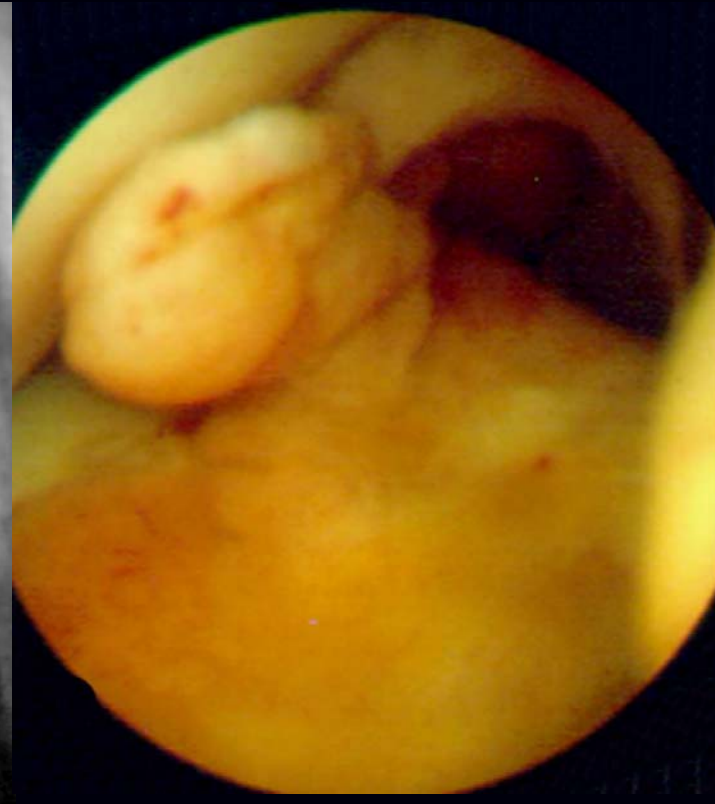
# Patologia

## Legamenti: pivot



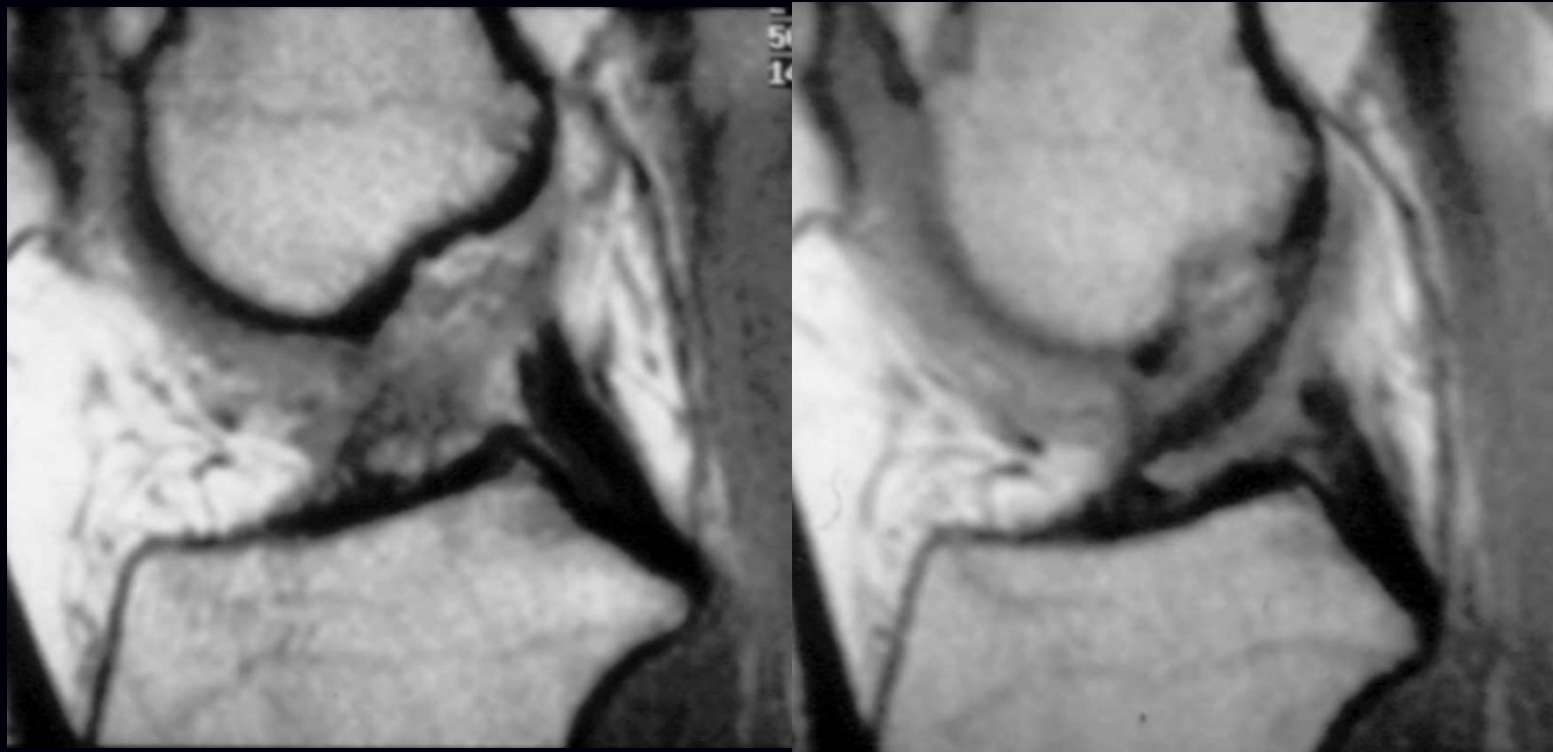
# Patologia

## Legamenti: pivot



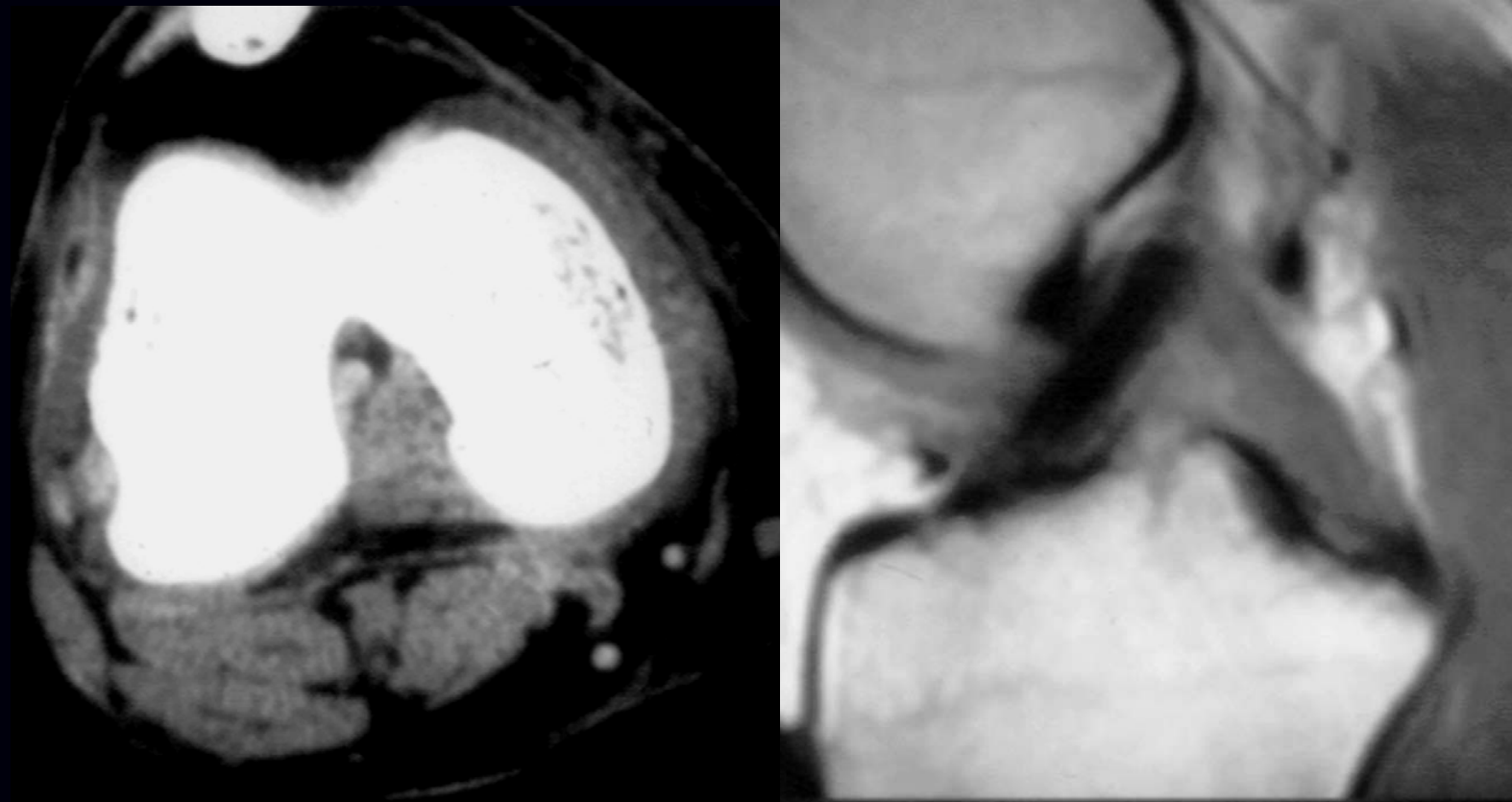
# Patologia

## Legamenti: pivot



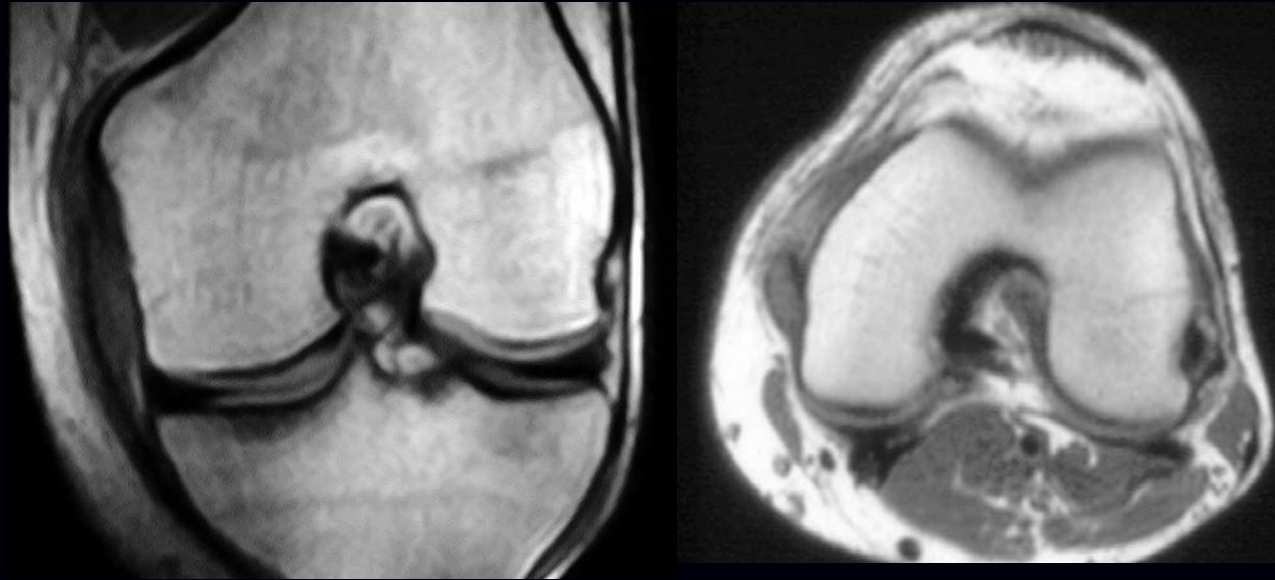
# Patologia

## Legamenti: pivot



# Patologia

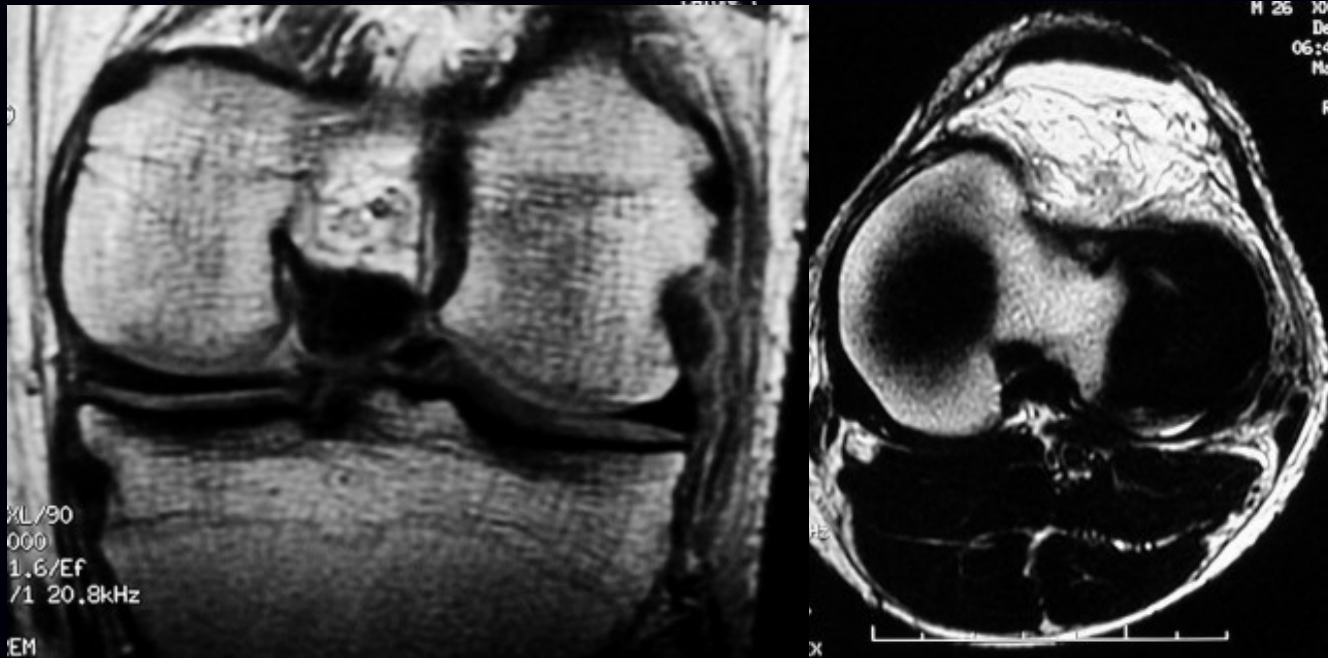
## Legamenti: altri



LLI

# Patologia

## Legamenti: altri



LLE

# Patologia

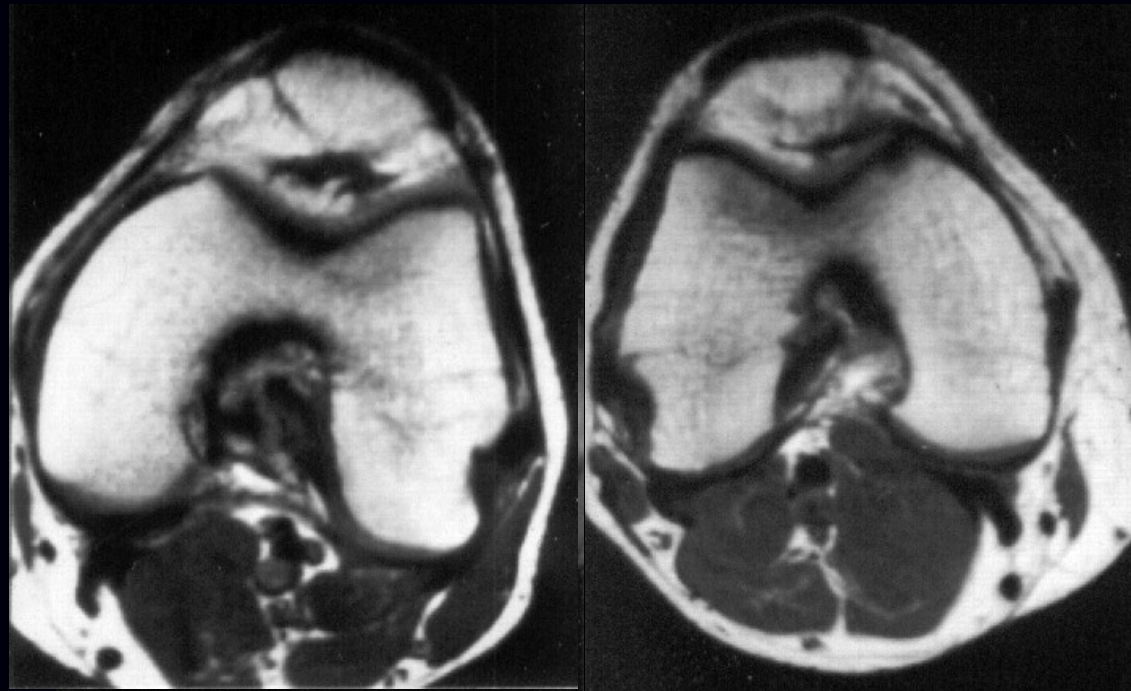
## Sinovia

- ✓ Pliche
- ✓ Apex sindrome
  - ✓ Cisti
  - ✓ Sinoviti



# Patologia

## Sinovia: pliche

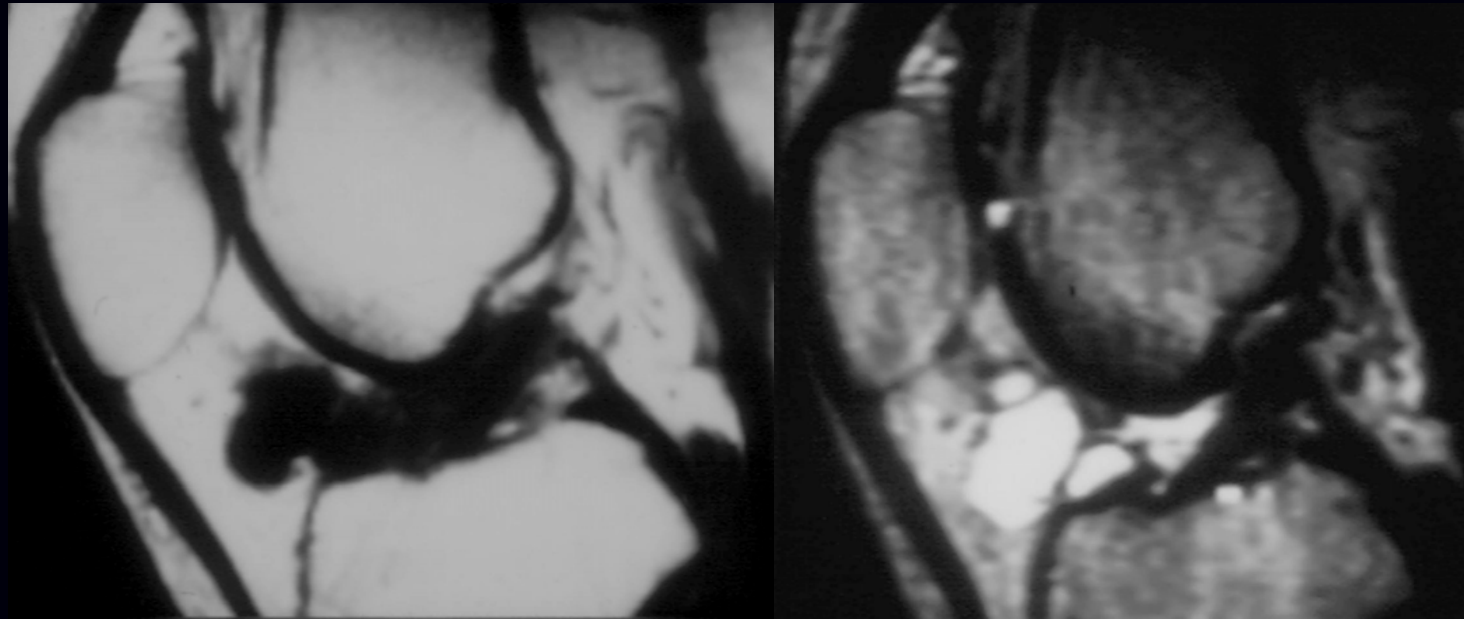


# Patologia

## Sinovia: cisti

### **PATOGENE**

- ad interferenza biomeccanica
- sul movimento

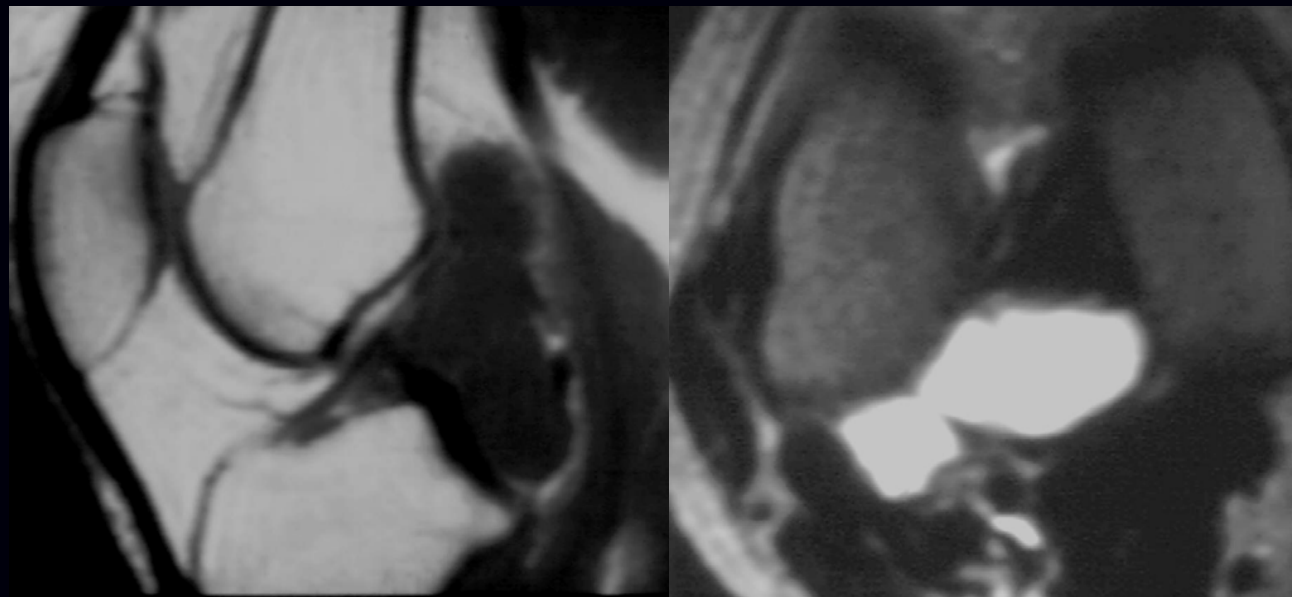


# Patologia

## Sinovia: cisti

### PATOGENE

- ad interferenza biomeccanica
- sulla stabilizzazione (baro-meccanocettori)



# Patologia

## Sinovia: sinoviti

### SINOVITI IPERPLASTICHE

*Acute e croniche*

Artropatie sieronegative

Artrosi

Sinoviti reattive post-traumatiche

### SINOVITI EMORRAGICHE

Artrite reumatoide

Emofilia

PVNS

### SINOVITI METAPLASICHE

Condromatosi sinoviale

Angioma sinoviale

# Patologia

## Sinovia: sinoviti

### SINOVITI IPERPLASTICHE CRONICHE

- Ispessimento della sinovia.
- Raramente accompagnato da versamento intrarticolare.
- In genere localizzate a livello dei recessi.
- Presenza sia di villosità che di noduli.
- Tendenza all'evoluzione fibrotica.

# Patologia

## Sinovia: sinoviti

### SINOVITI IPERPLASTICHE CRONICHE

Tali caratteristiche possono determinare un “tipico”  
pattern RM.

Medio-bassa intensità di  
segnale in T1

Medio-alta intensità di  
segnale in T2



# Patologia

## Sinovia: sinoviti

### SINOVITI EMORRAGICHE

#### *PVNS*

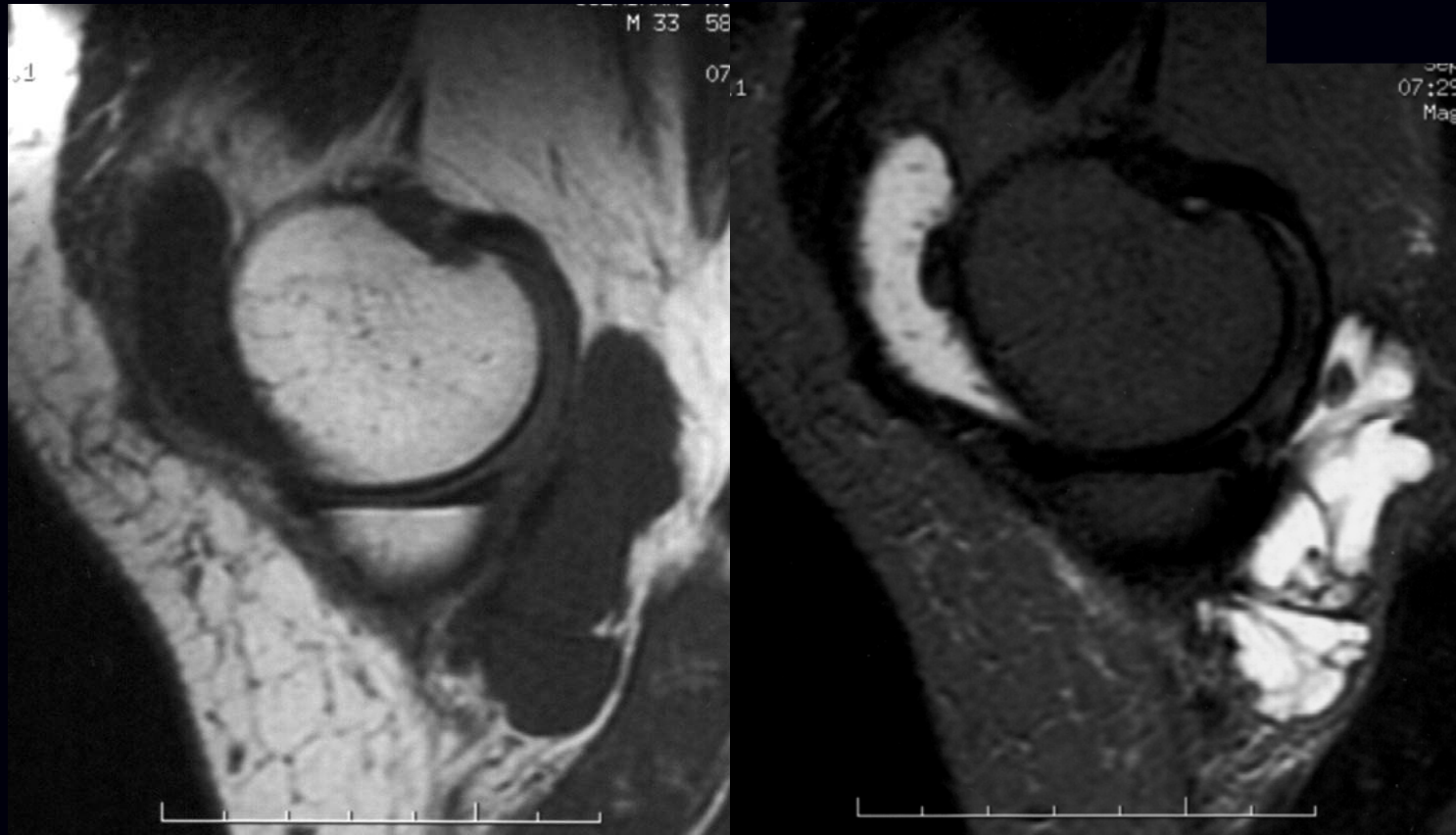
- Forma diffusa o solitaria.
- Dolore ed impotenza funzionale.
- Mai accompagnata da emartro.
- Presenza di precipitati o inclusi emosiderinici.
- Caratteristiche di aggressività.
- Tendenza alla recidiva ed alla eteroplasia.

# Patologia

## Sinovia: sinoviti

### SINOVITI EMORRAGICHE

### *PVNS*



*(forma diffusa)*

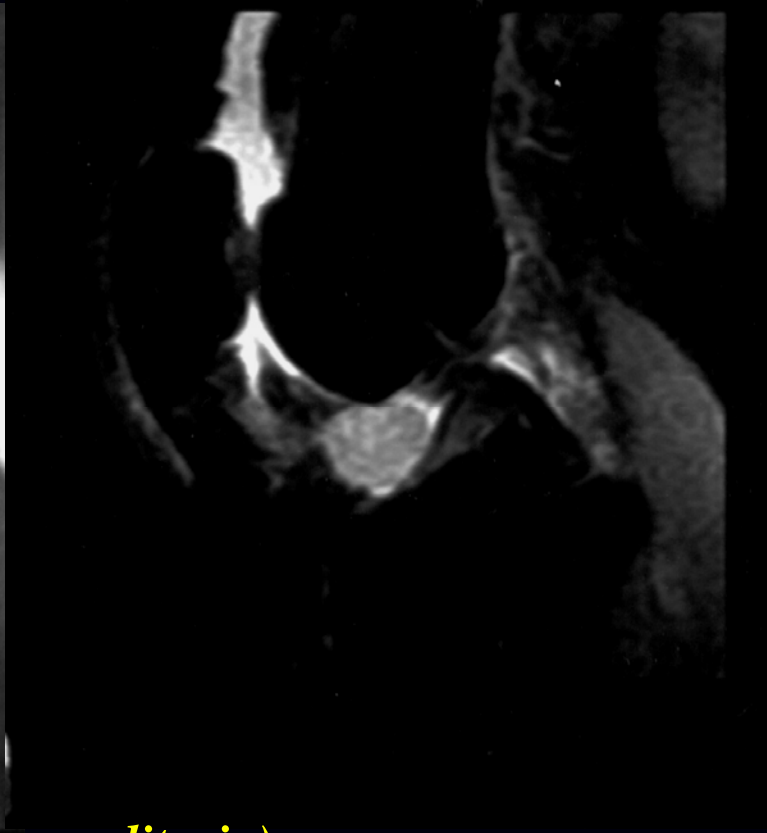
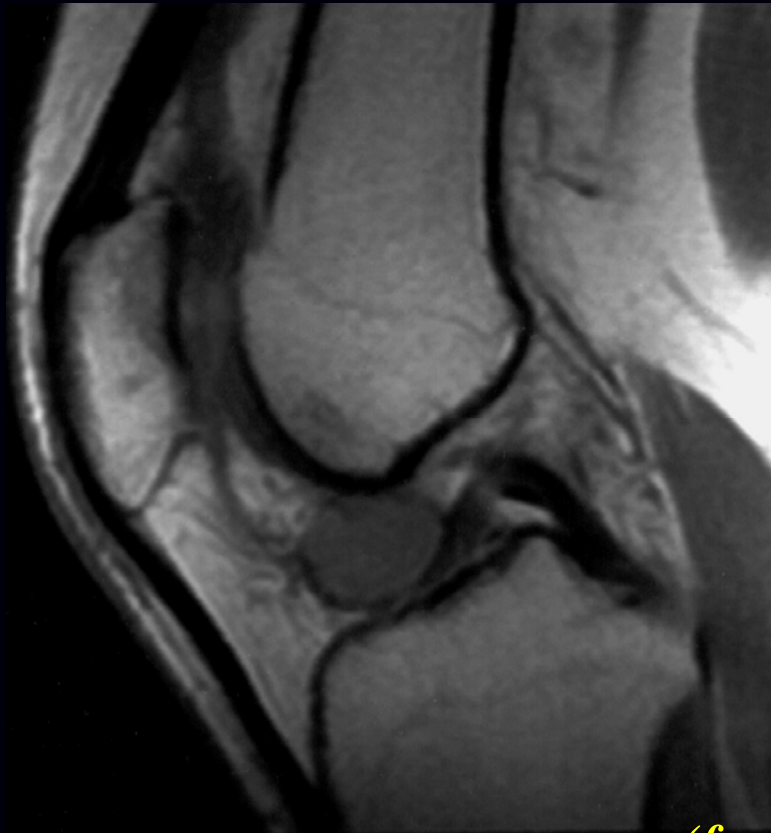


# Patologia

Sinovia: sinoviti

SINOVITI EMORRAGICHE

*PVNS*



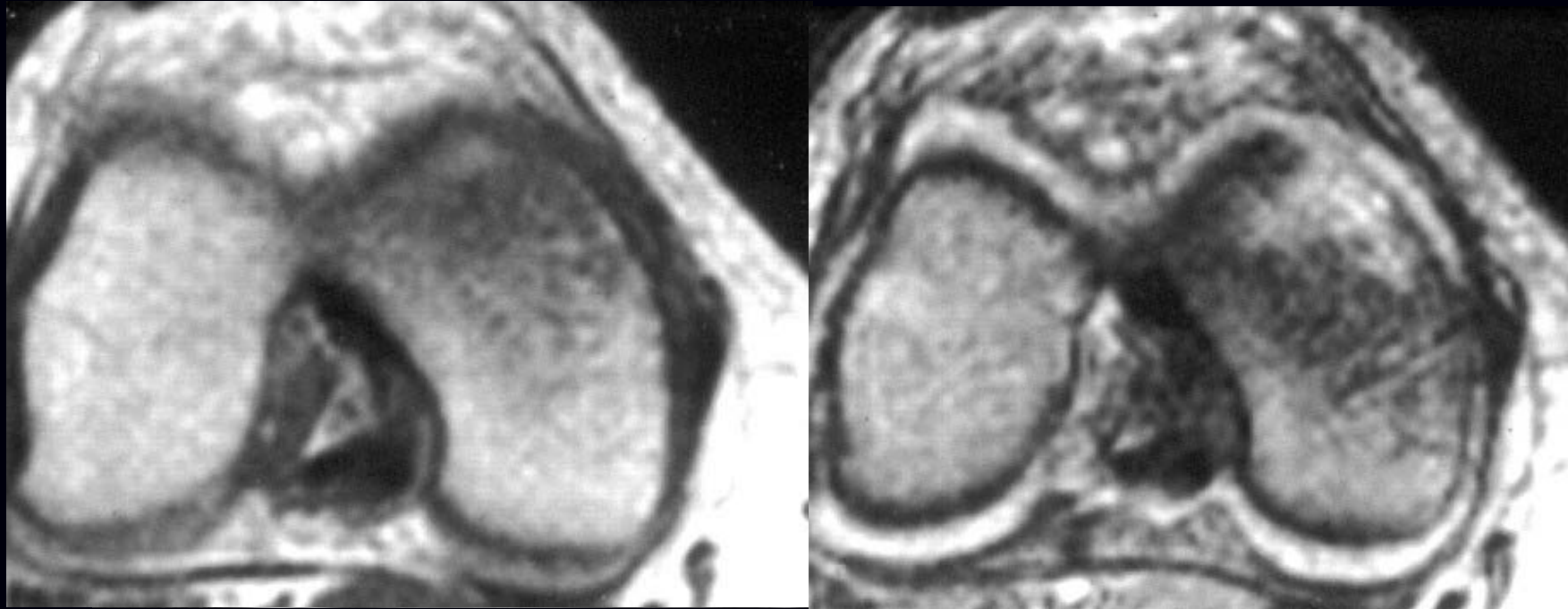
*(forma solitaria)*

# Patologia Osteocondrale

- ✓ Bone bruise
- ✓ Fratture condrali ed osteocondrali
- ✓ Osteocondriti dissecanti
- ✓ Condropatie

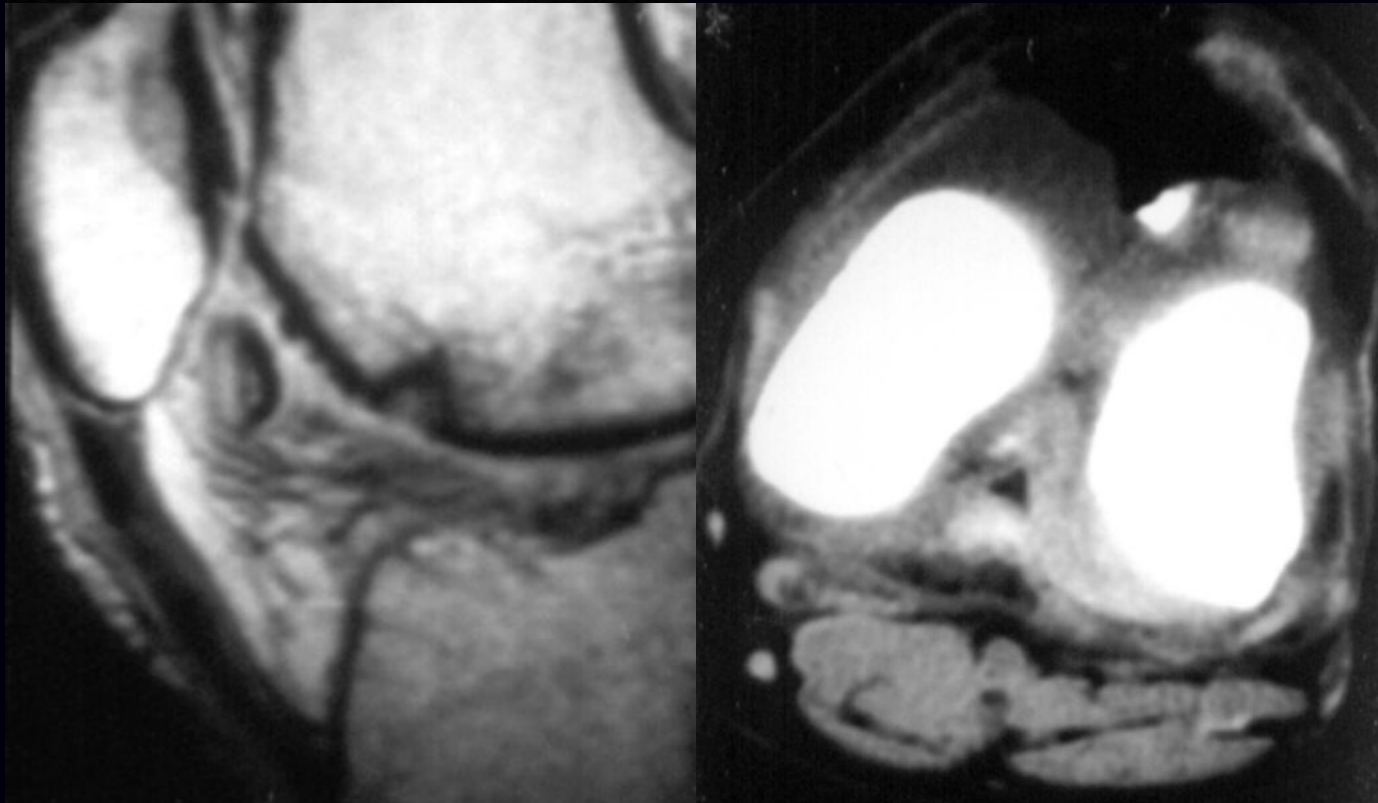
# Patologia

Osteocondrale: bone bruise



# Patologia Osteocondrale

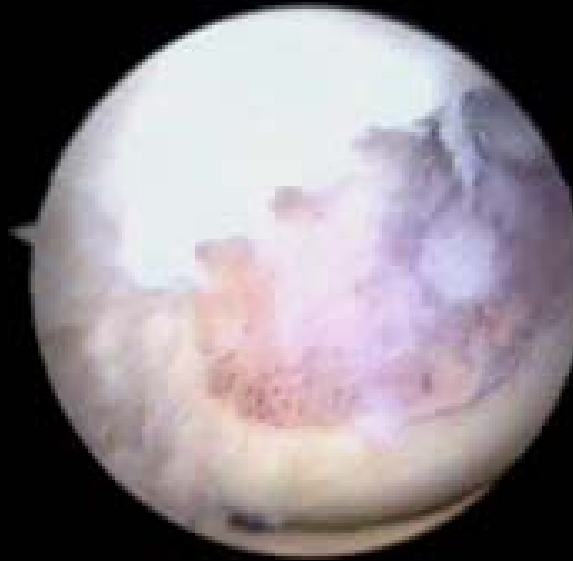
Fratture condrali ed osteocondrali



# Patologia

## Osteocondrale

### Osteocondrite dissecante



# Patologia

## Osteocondrale: condropatie

Esperienza personale

Grado 0

Grado 1

Grado 2

Grado 3

Grado 4

Grado 5



Sensibilità 55-65%

Specificità 80-90%

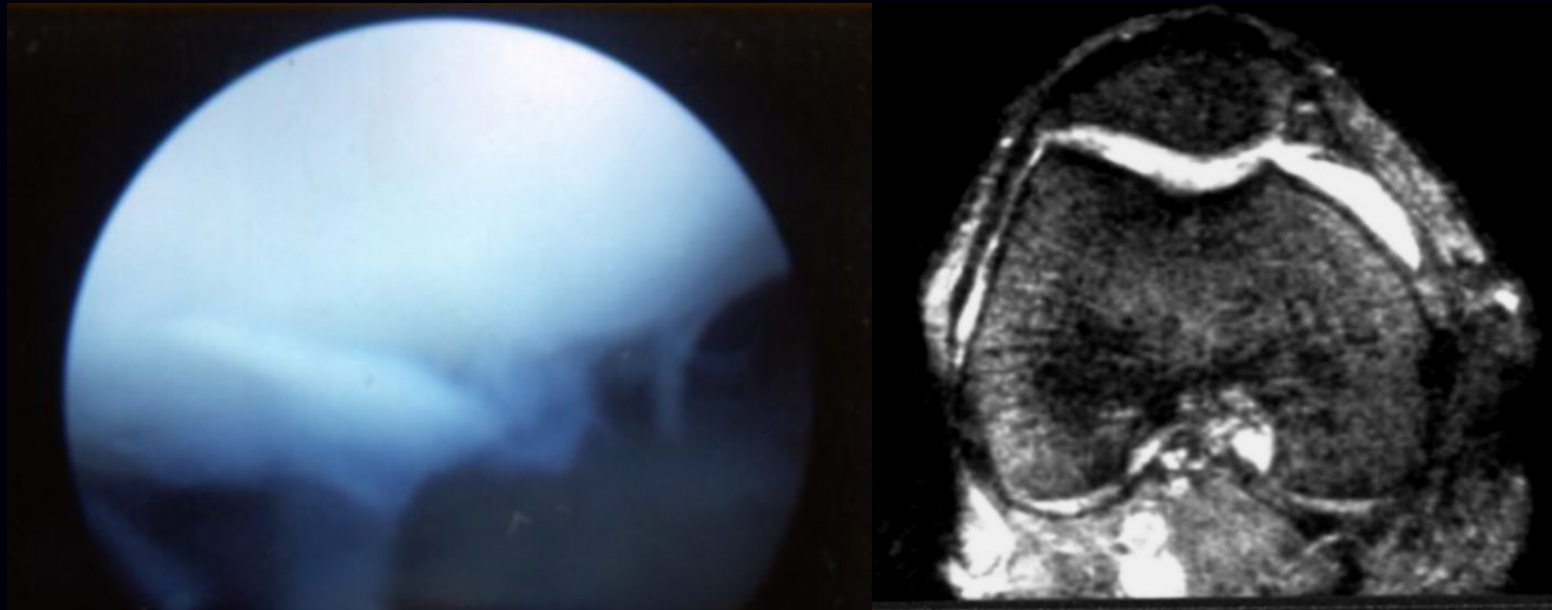


Sensibilità 85-95%

Specificità 92-100%

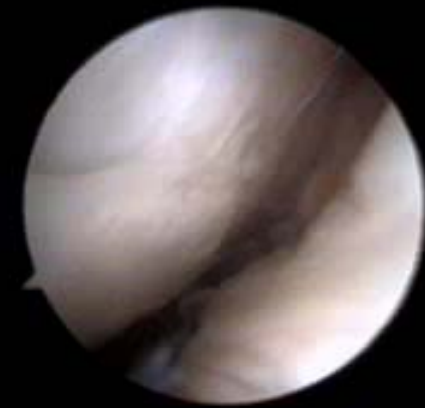
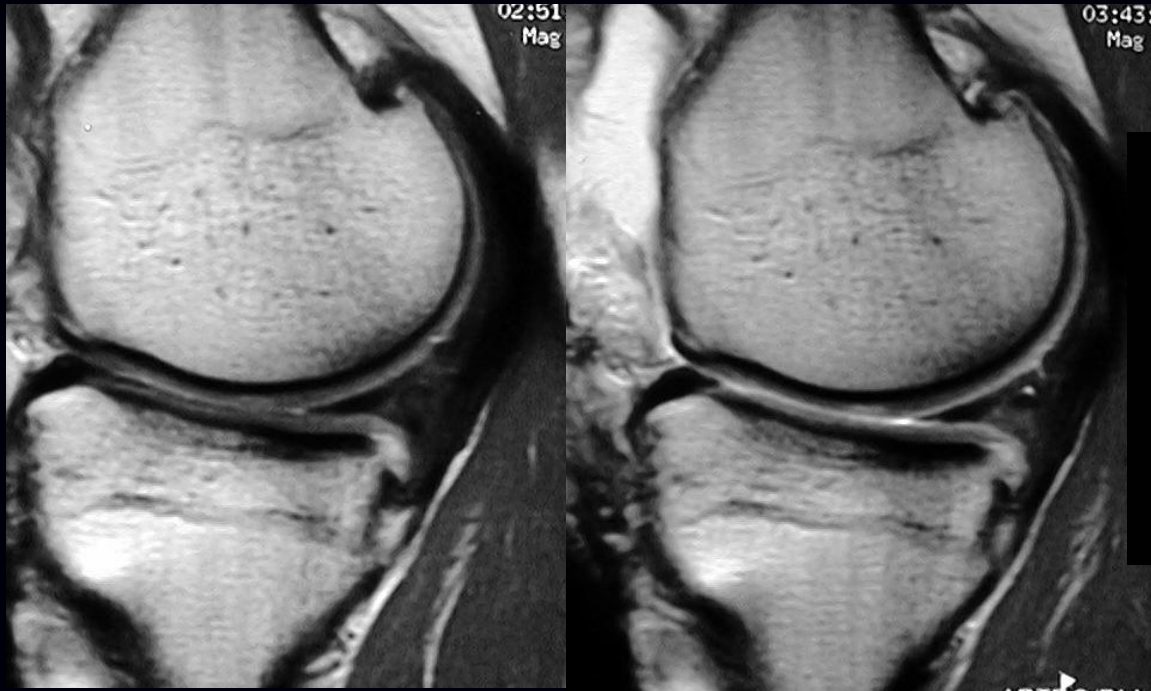
# Patologia

Osteocondrale: condropatie



# Patologia

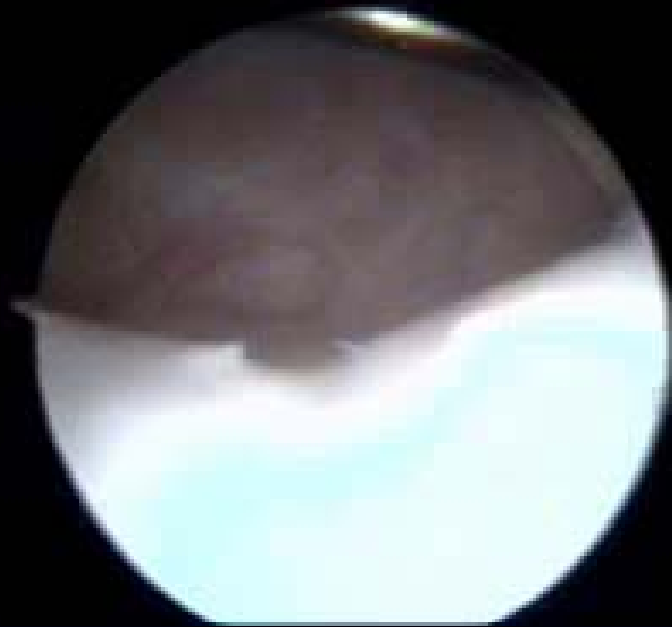
## Osteocondrale: condropatie





# Patologia

## Osteocondrale: condropatie



# Patologia

## Osteocondrale: condropatie

