

WWW.FISIOKINESITERAPIA.BIZ

FRATTURE DI BACINO

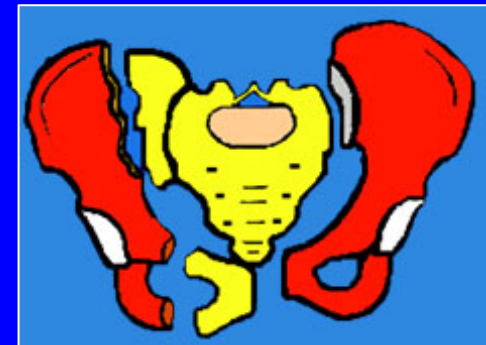


Classificazione delle fratture di bacino

- **Fratture del bacino di tipo A**
 - Parcellari
- **Fratture del bacino di tipo B**
 - Rottura incompleta dell'arco posteriore
- **Fratture del bacino di tipo C**
 - Rottura completa dell'arco posteriore

Classificazione delle fratture di bacino

- **Fratture del bacino di tipo A**
 - Parcellari
- **Fratture del bacino di tipo B**
 - Rottura incompleta dell'arco posteriore
- **Fratture del bacino di tipo C**
 - Rottura completa dell'arco posteriore



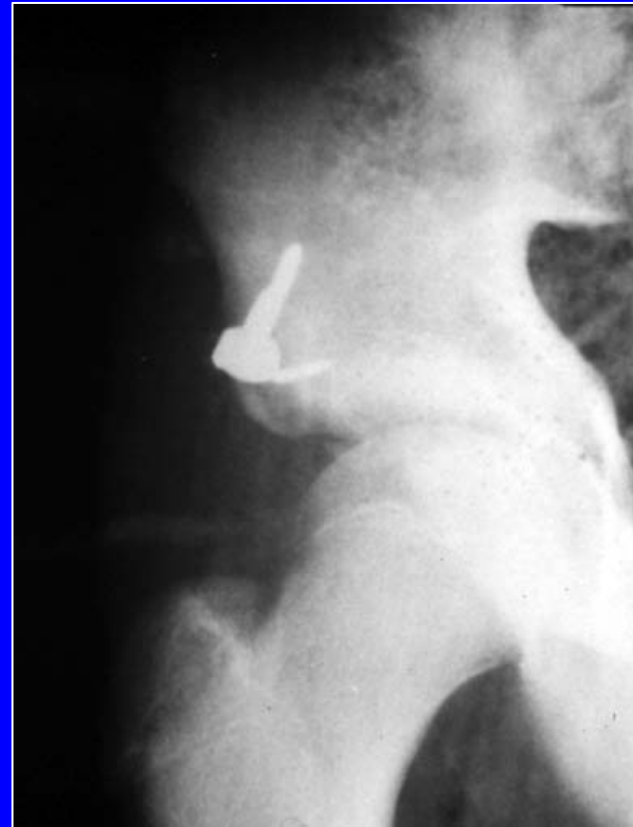
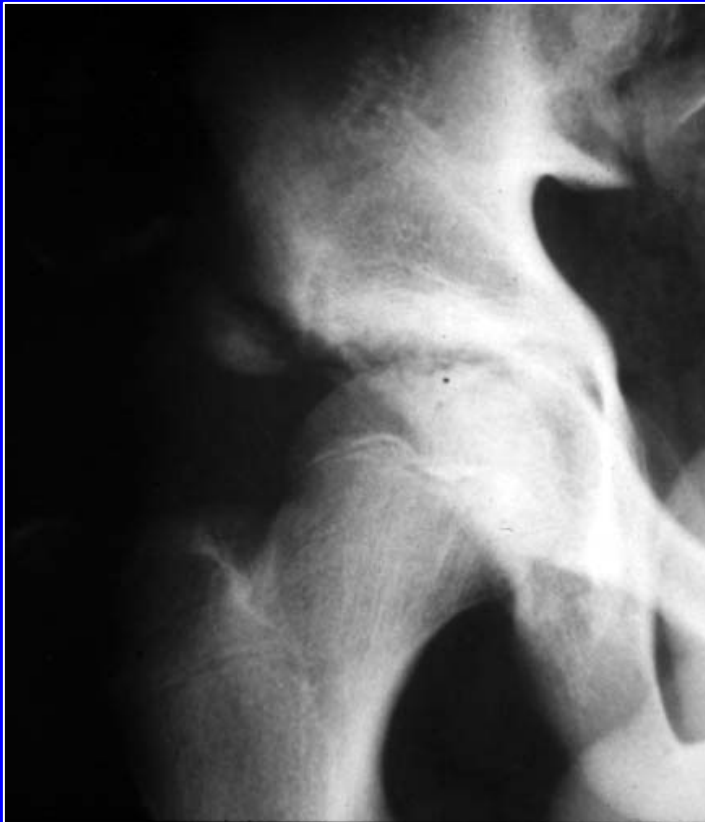
Fratture del bacino di tipo A

- **Distacco**
 - Spine iliache Ant-Sup e Ant-Inf
 - Cresta iliaca
 - Ischio
- **Trauma diretto**
 - Ala iliaca
 - Branca pubica
- **Fratture del sacro**

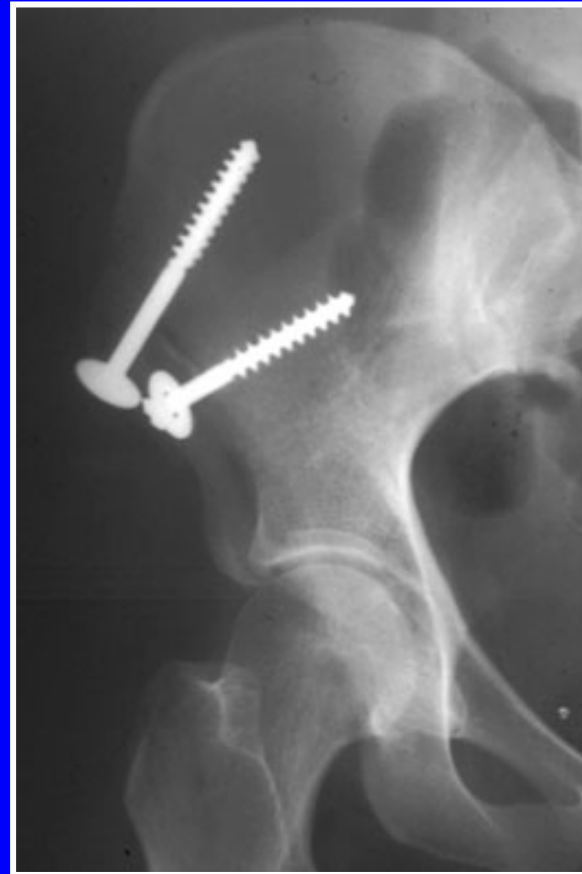
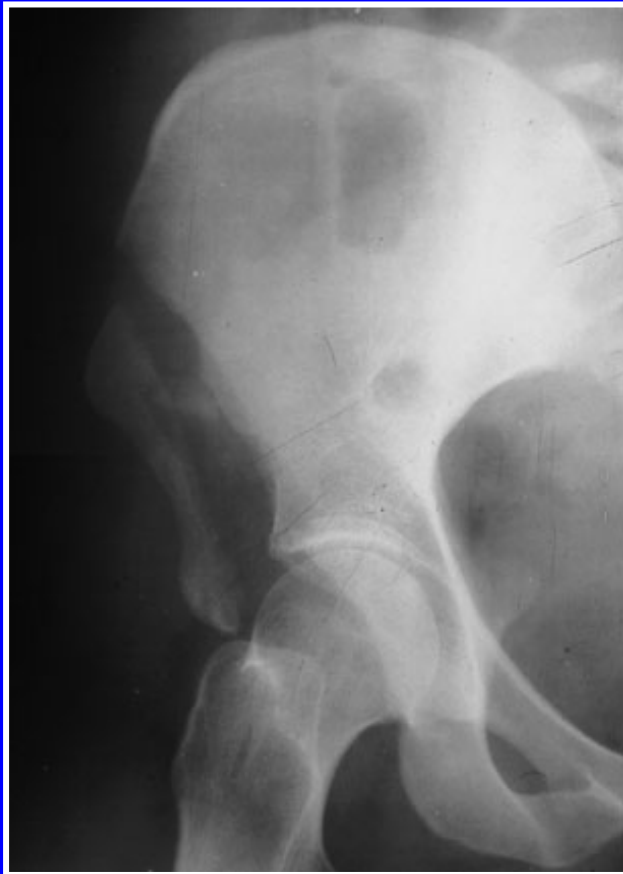
Frattura della spina ilaiaca ant-inf



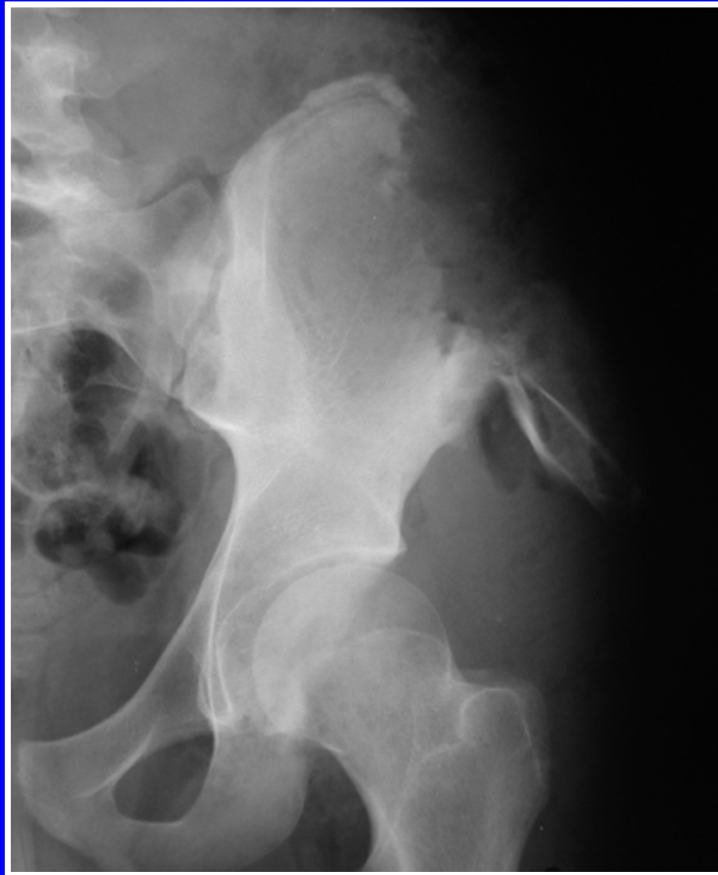
Frattura della spina ilaiaca ant-inf



Frattura della spina iliaca ant-sup



Frattura della cresta iliaca



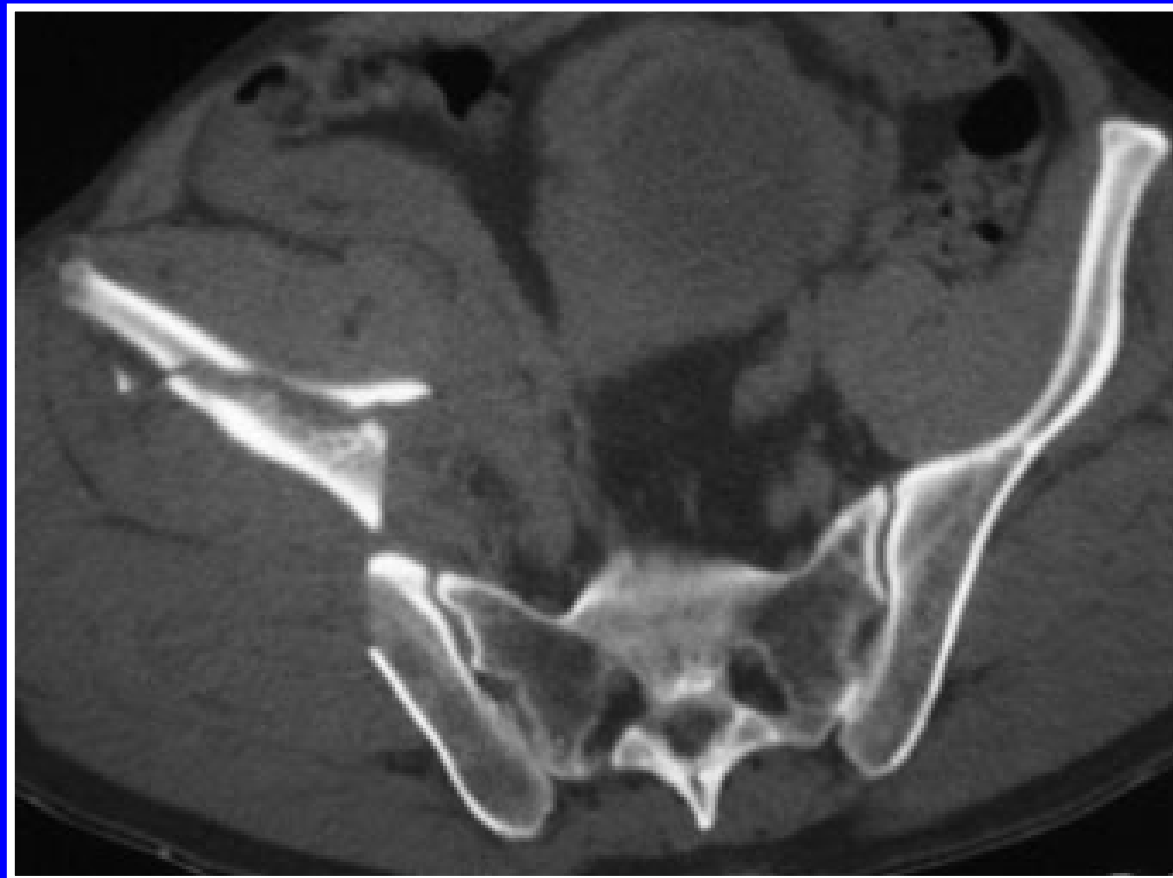
Frattura dell'ischio



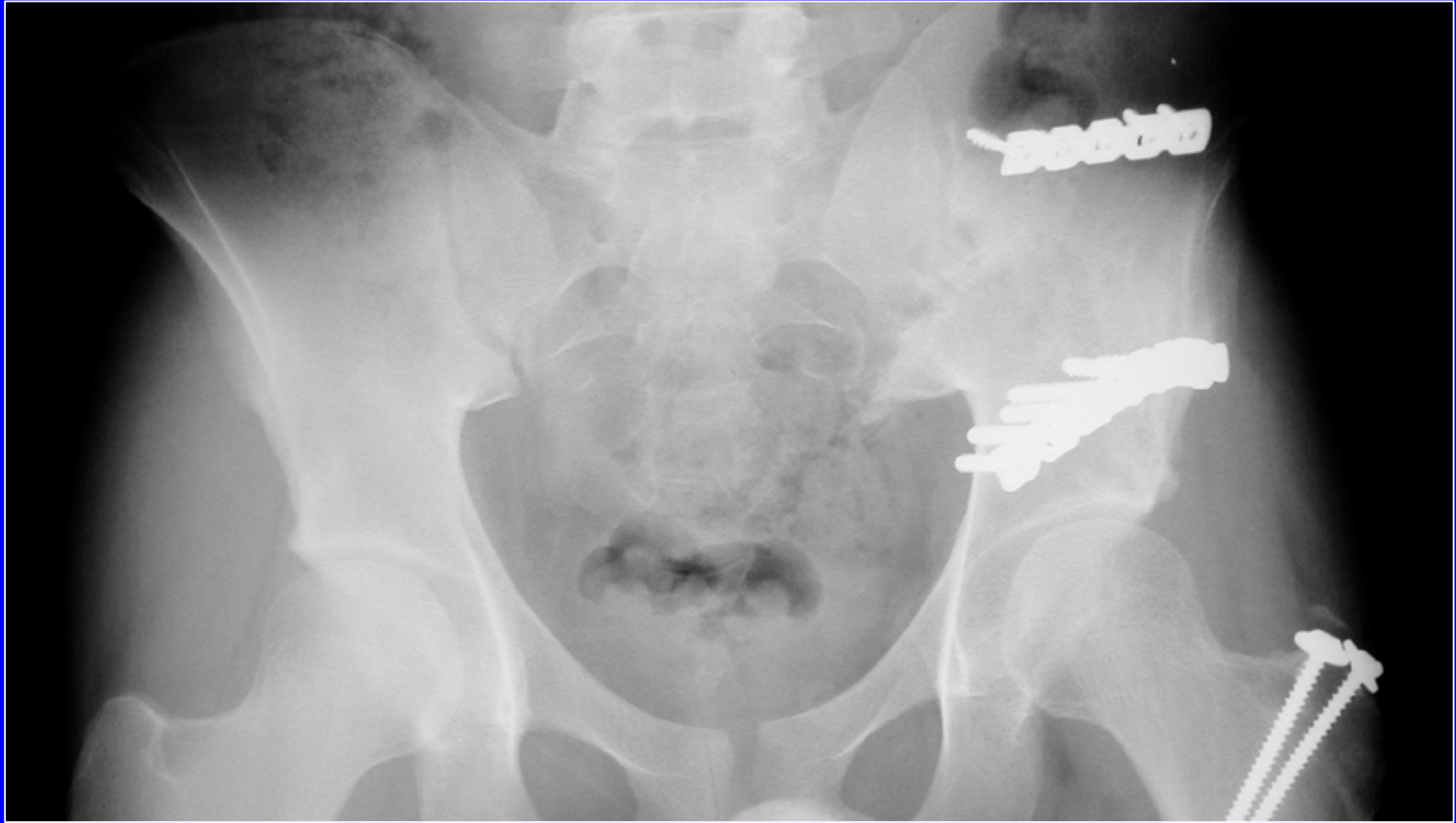


La trazione esercitata dai muscoli ischio-crurali è in grado di distaccare per trazione la vite

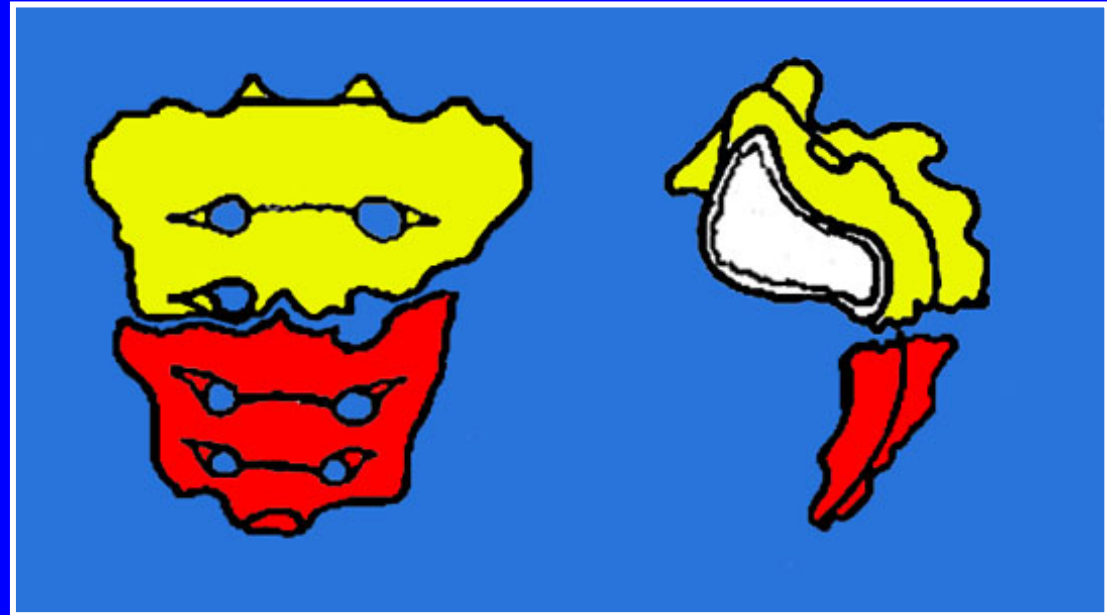
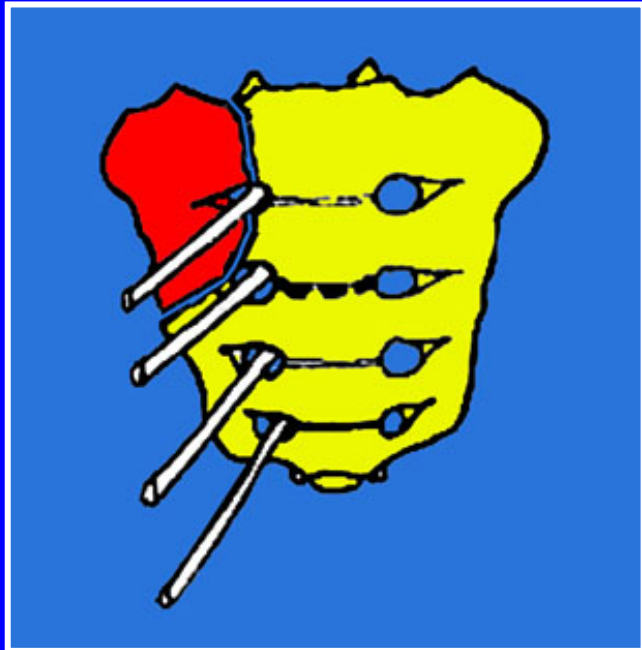
Fratture dell'ala iliaca







Fratture parcellari



Fratture del bacino di tipo B

Rotture incomplete dell'arco posteriore

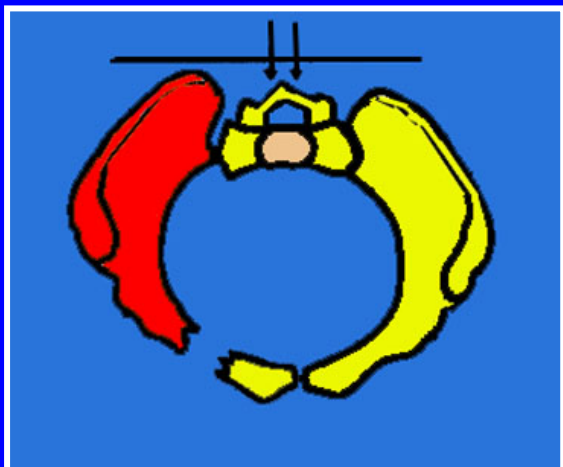
- **In rotazione "libro aperto"**
 - Disgiunzione sacro iliaca anteriore
 - Fratture del sacro
- **In rotazione interna "compressione laterale"**
 - Fratture schiacciamento anteriore del sacro
 - Lussazione parziale sacro-iliaca
 - **Lesione incompleta dell'arco posteriore, bilaterale**

Fratture del bacino del tipo C

Rottura completa dell'arco posteriore

- Rottura completa dell'arco posteriore unilaterale
- Rottura completa dell'arco posteriore da un lato ed incompleta dell'altro
- Rottura completa dell'arco posteriore, bilaterale

Compressione ant-post



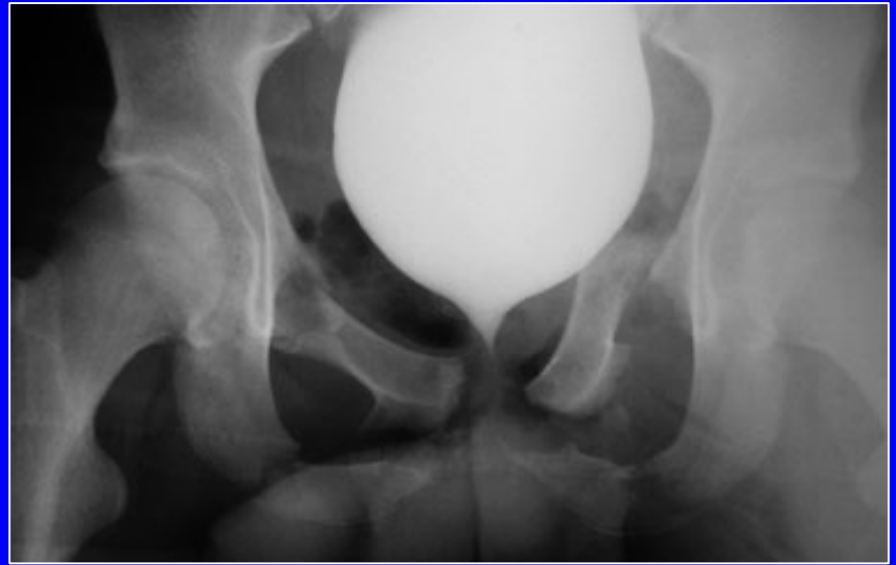
Compressione ant-post



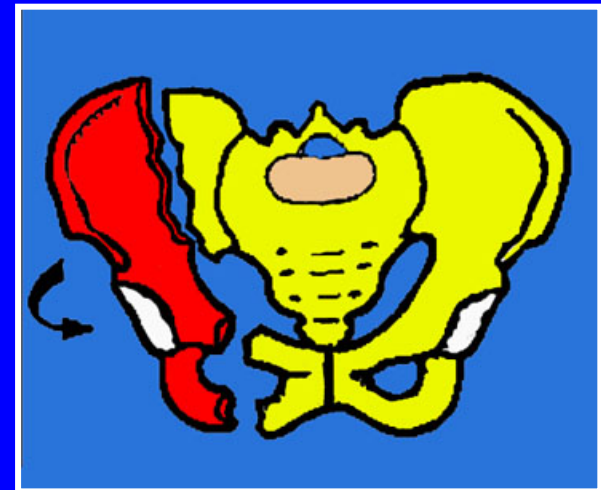
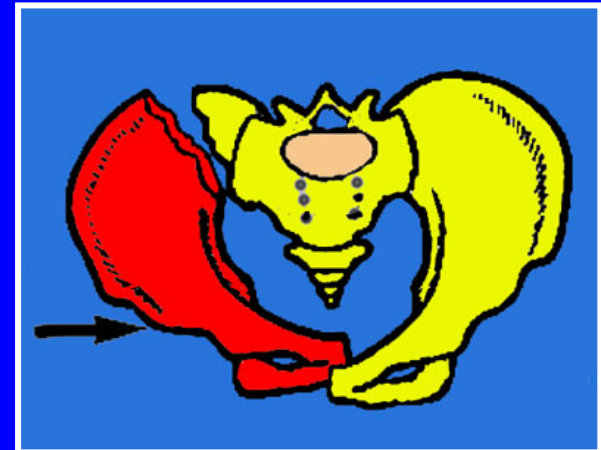
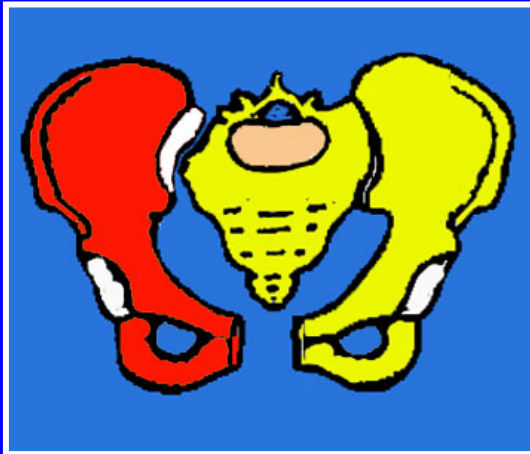
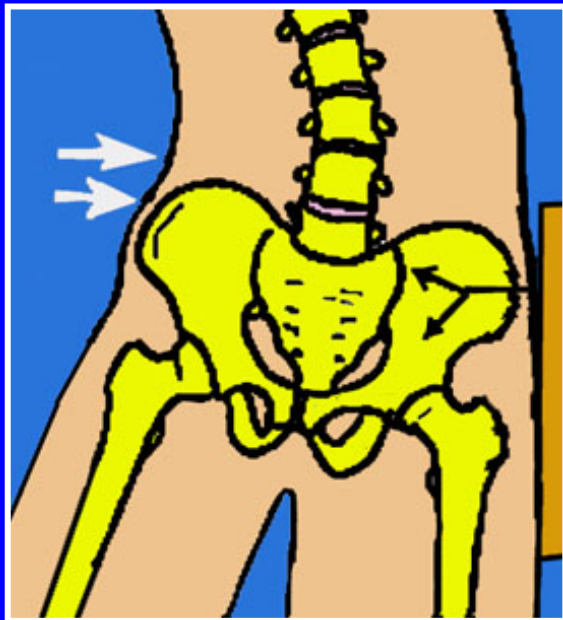
Compressione ant-post





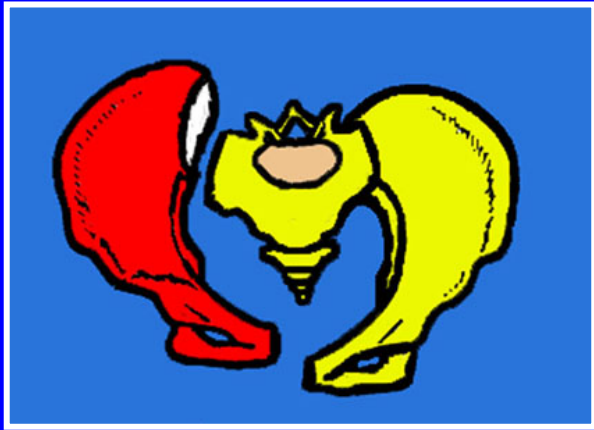


Compressione laterale

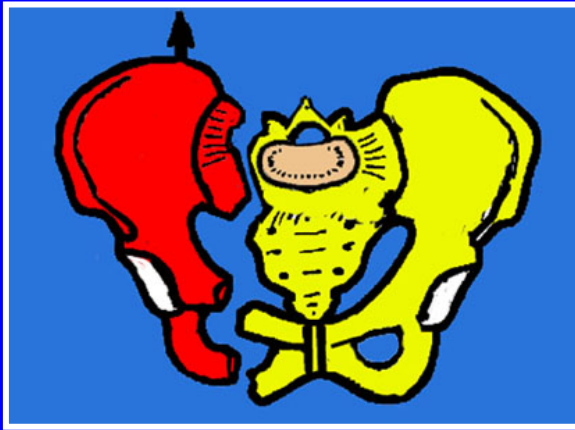


Taglio verticale

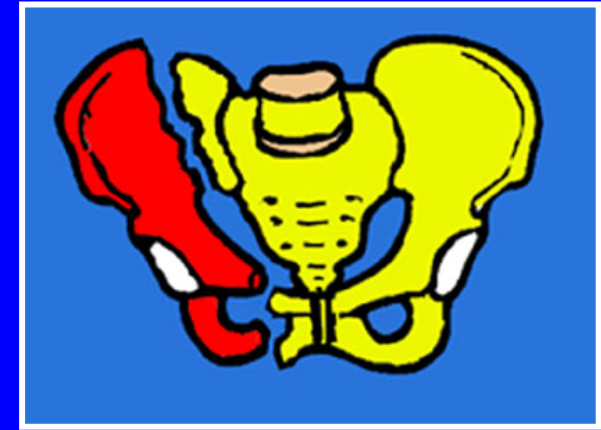
Caduta dall'alto con carico su un solo piede



Disgiunzione sacro-iliaca



Fratt. di Voillemier



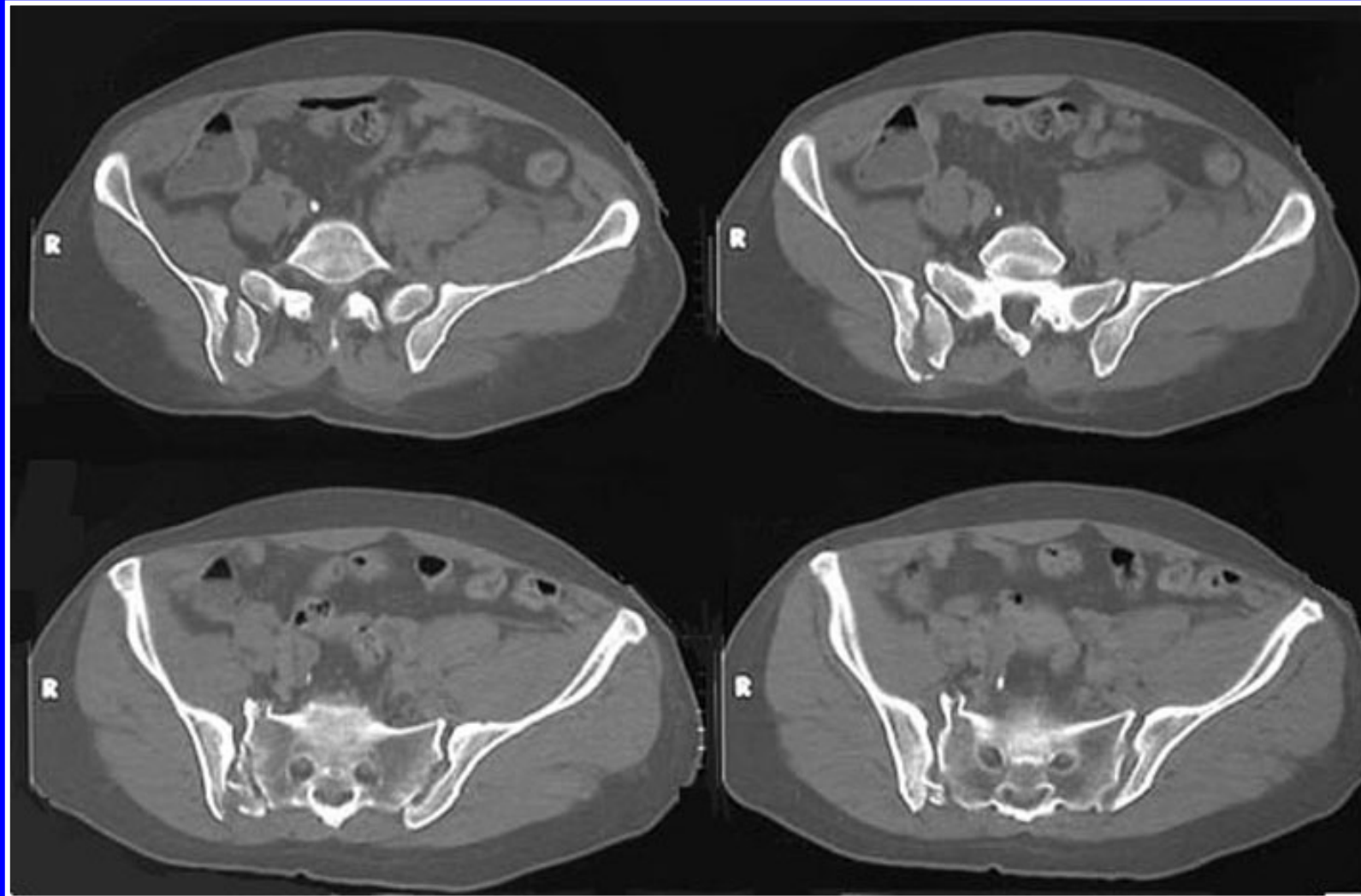
Fratt. di Malgaigne



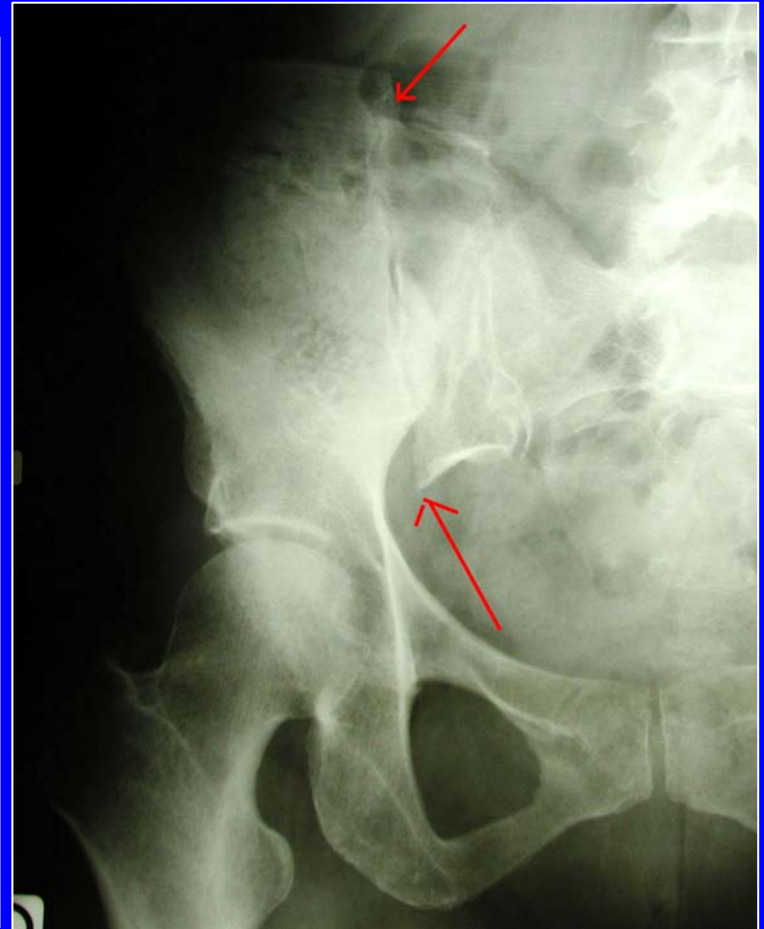
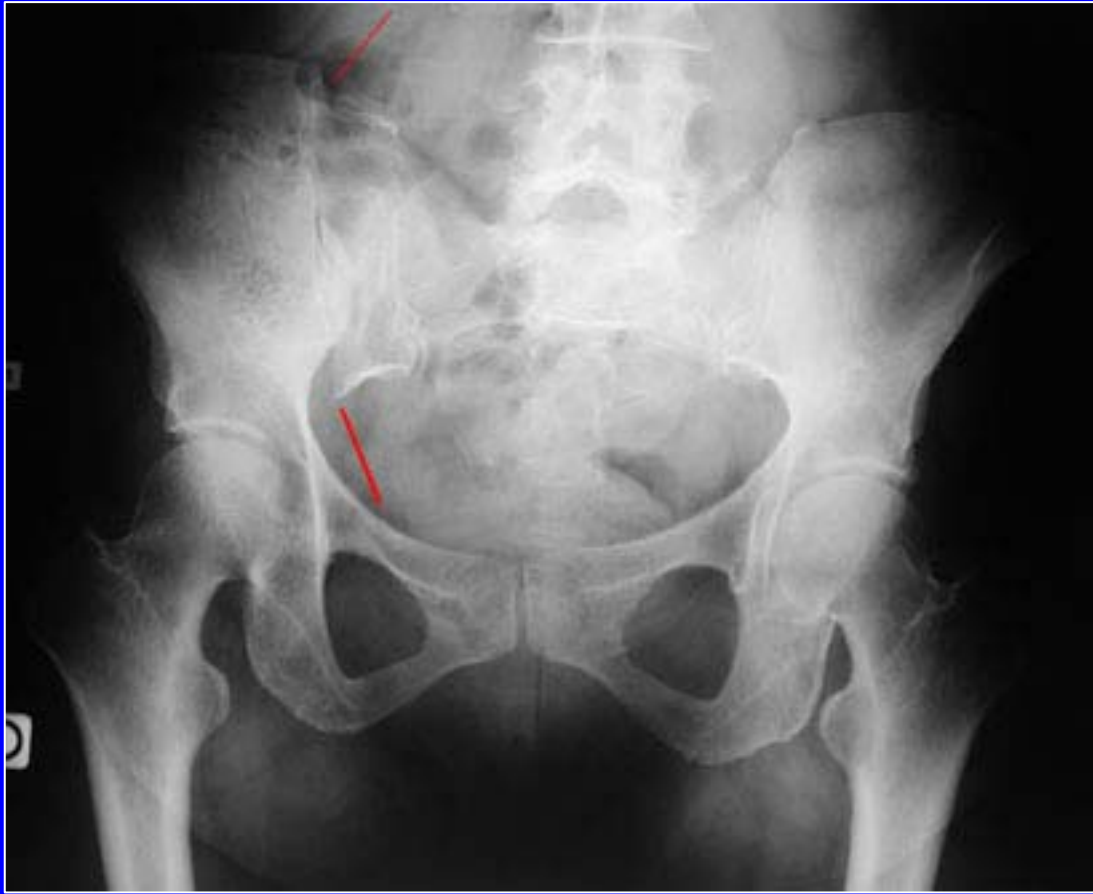
Disgiunzione sacro-iliaca taglio verticale



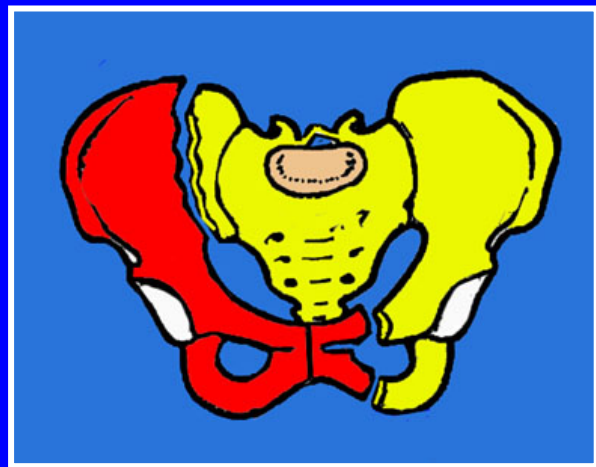
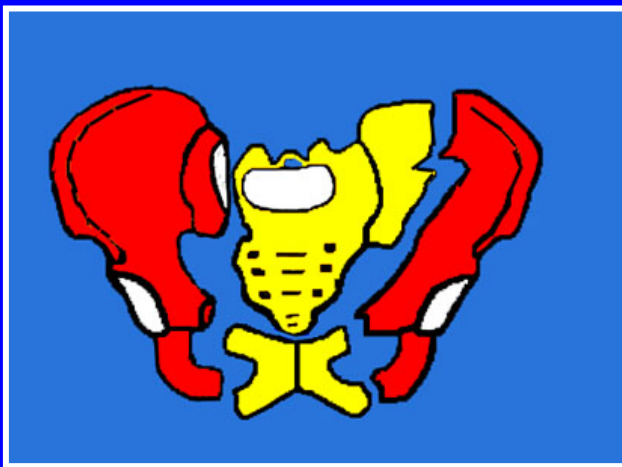
Fratture della sacro-iliaca







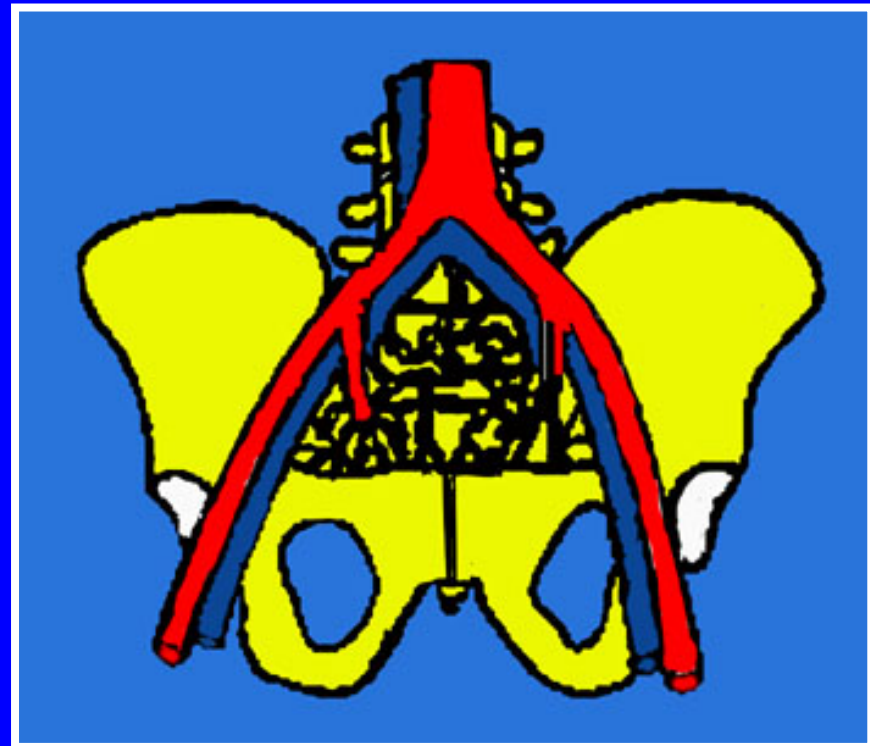
Compressioni asimmetriche



Scomposizioni



Compressioni nervose

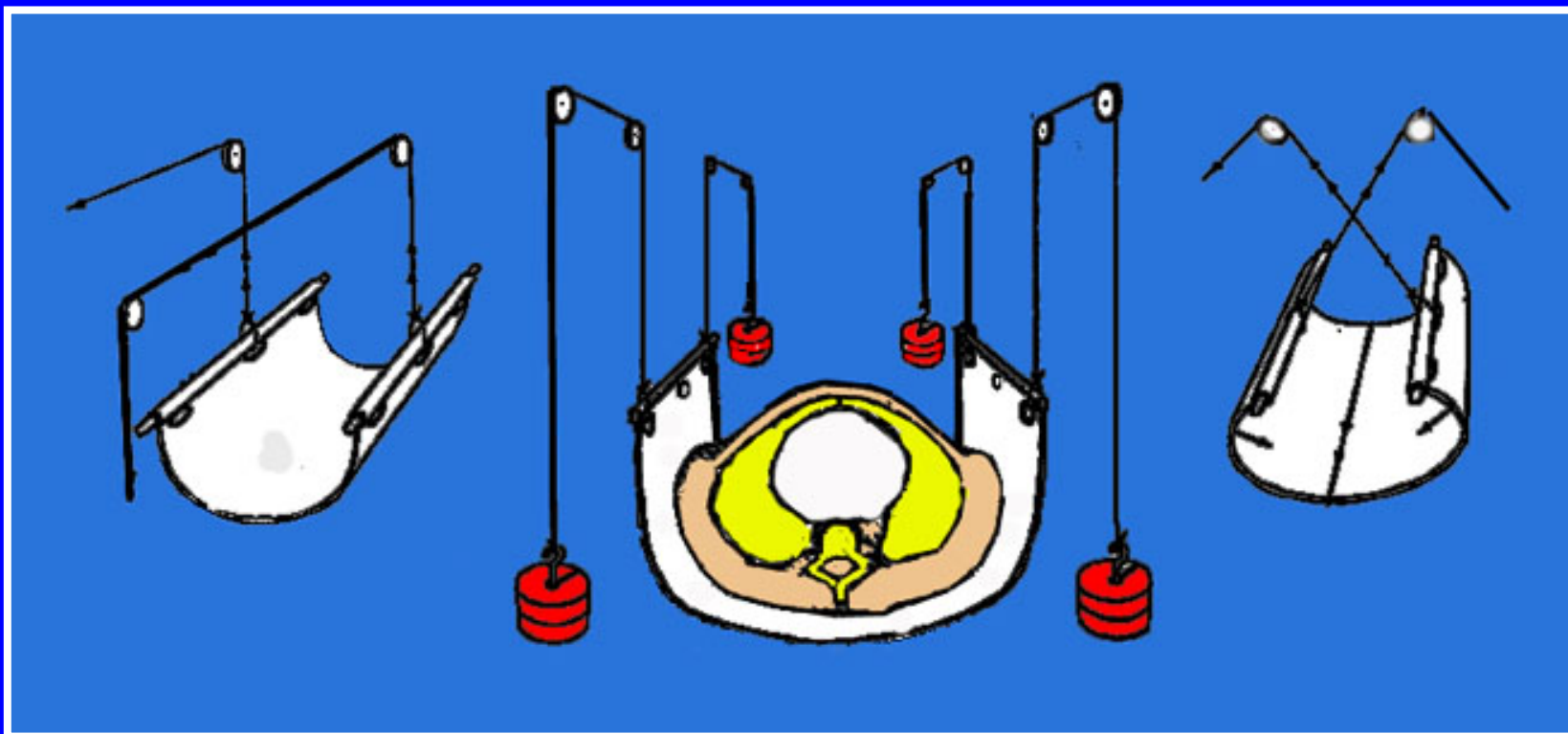


Compressioni vascolari

Cenni di anatomia

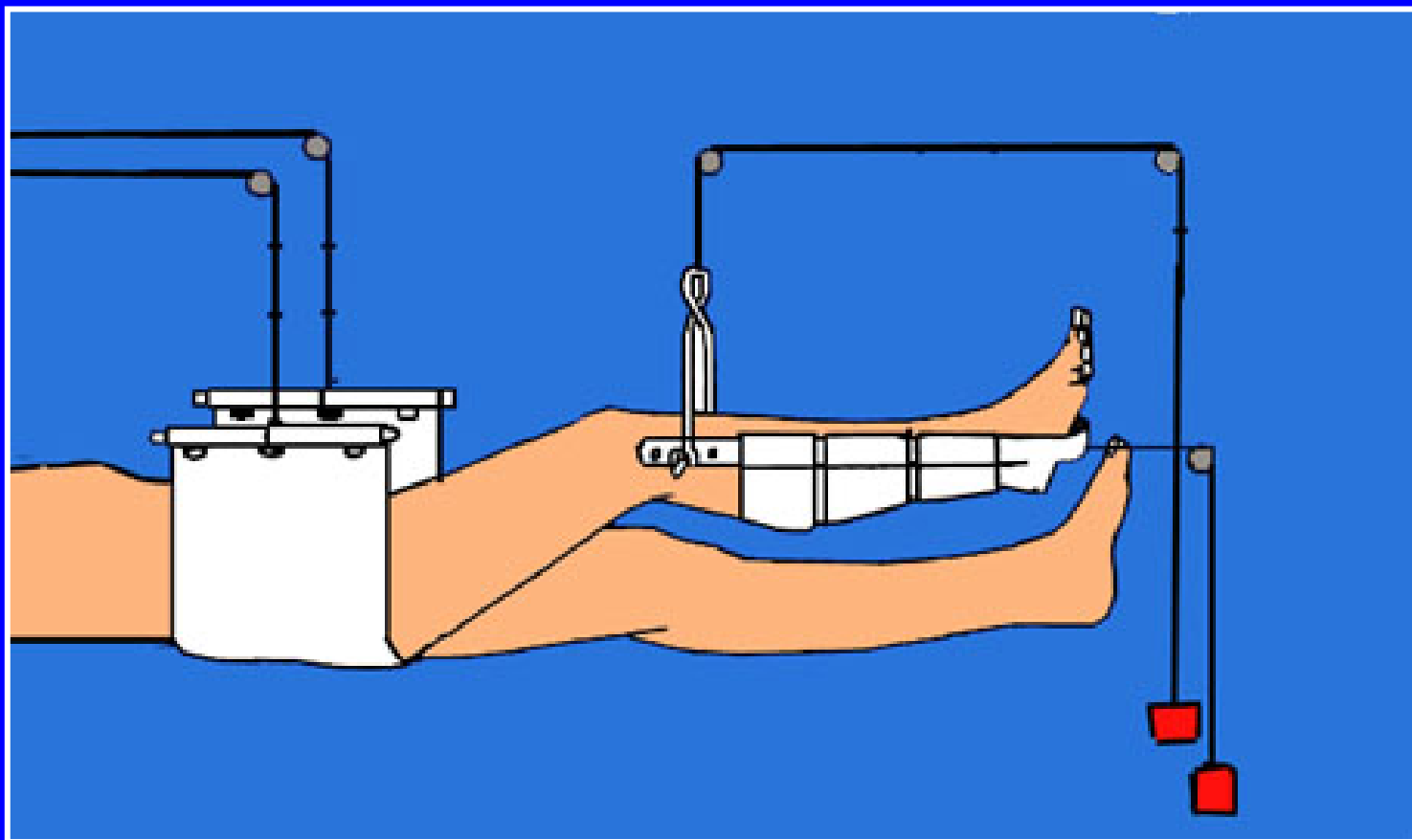


Trattamento ortopedico

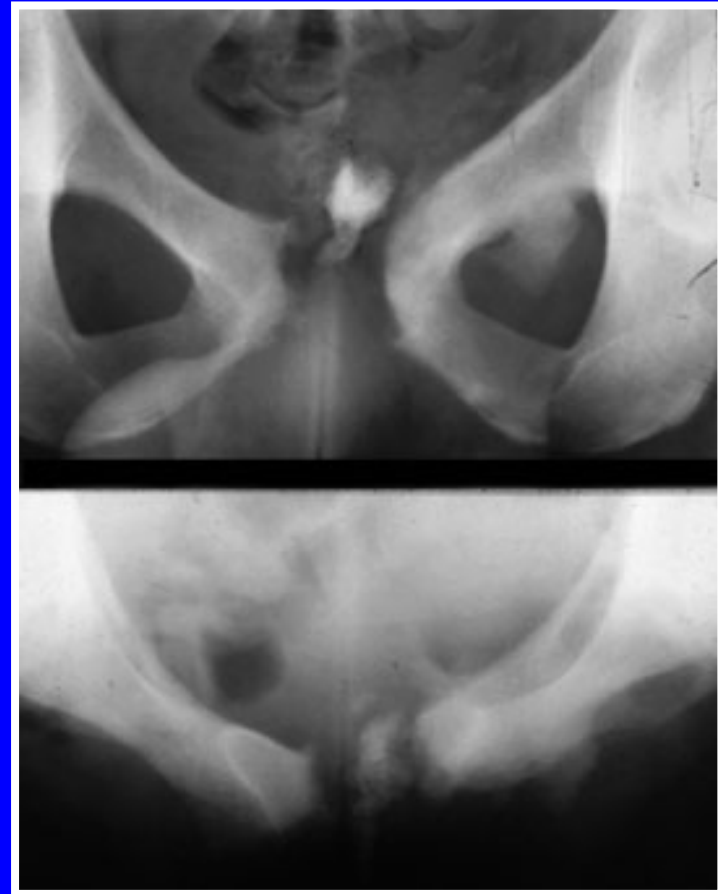
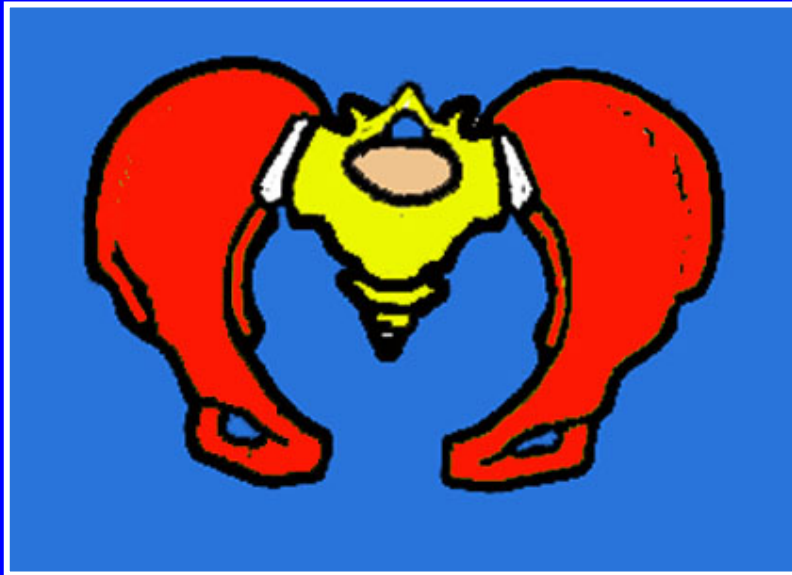


Amaca di sospensione

Amaca + trazione per la riduzione di scomposizione (taglio) verticale

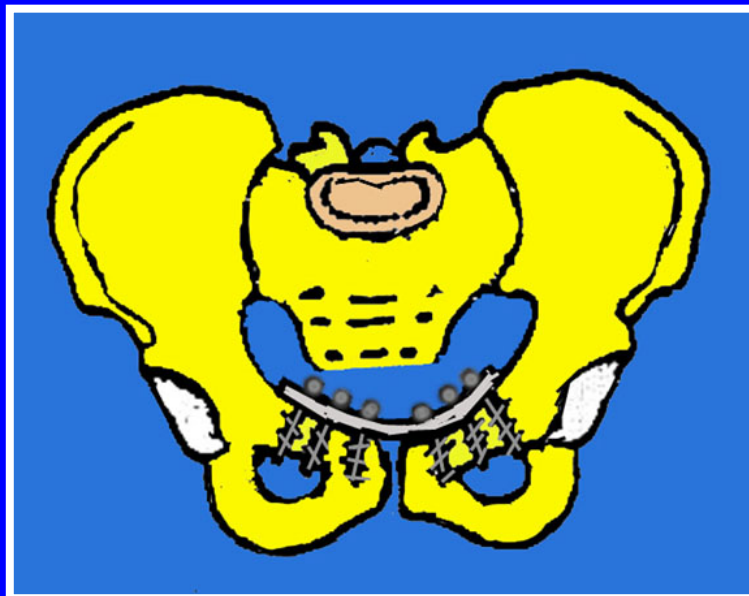
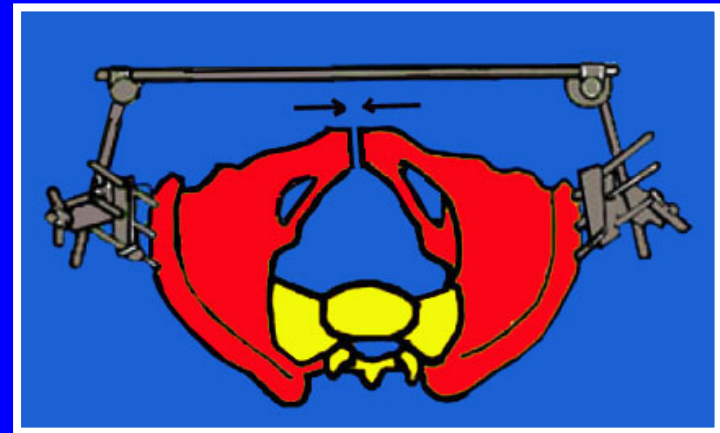
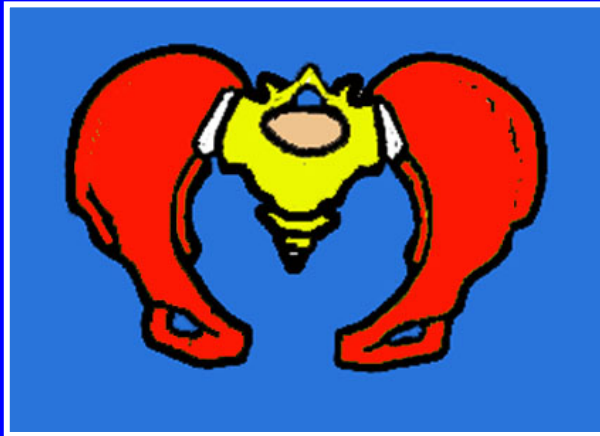


Disgiunzione della sinfisi pubica

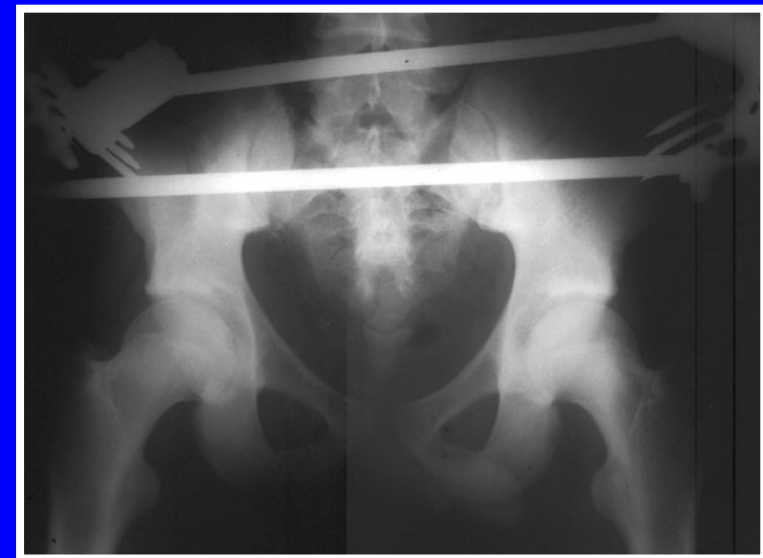


Complicazioni ureterali

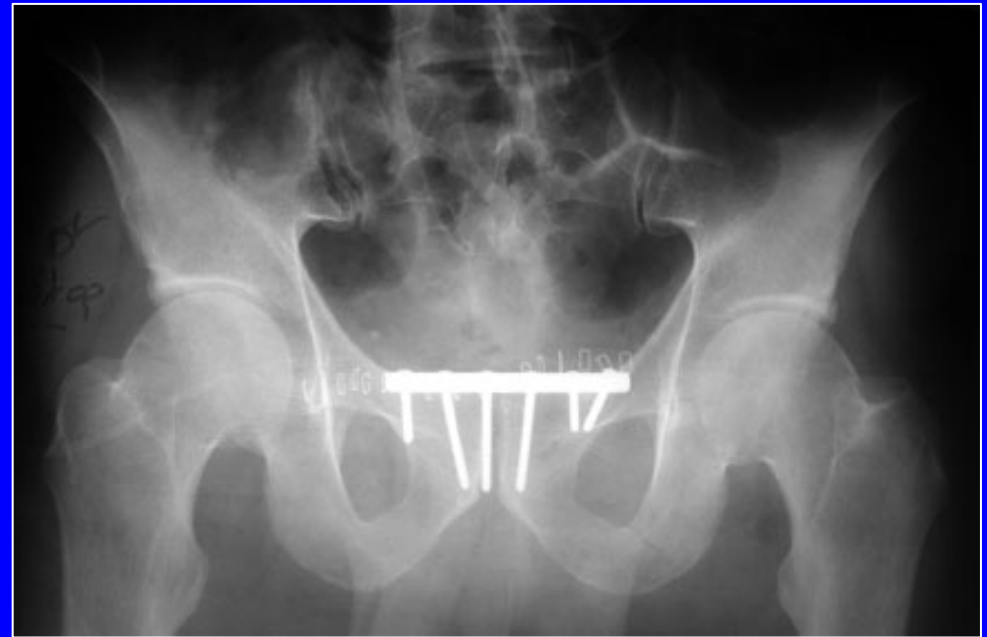
Trattamento chirurgico della disgiunzione con conservazione dei legamenti posteriori



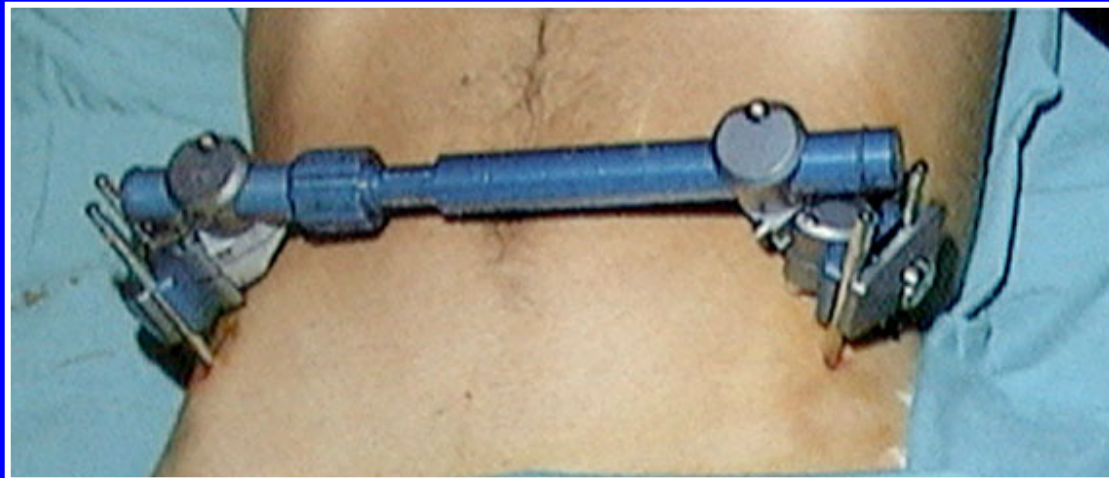
Placca



Fissatore esterno

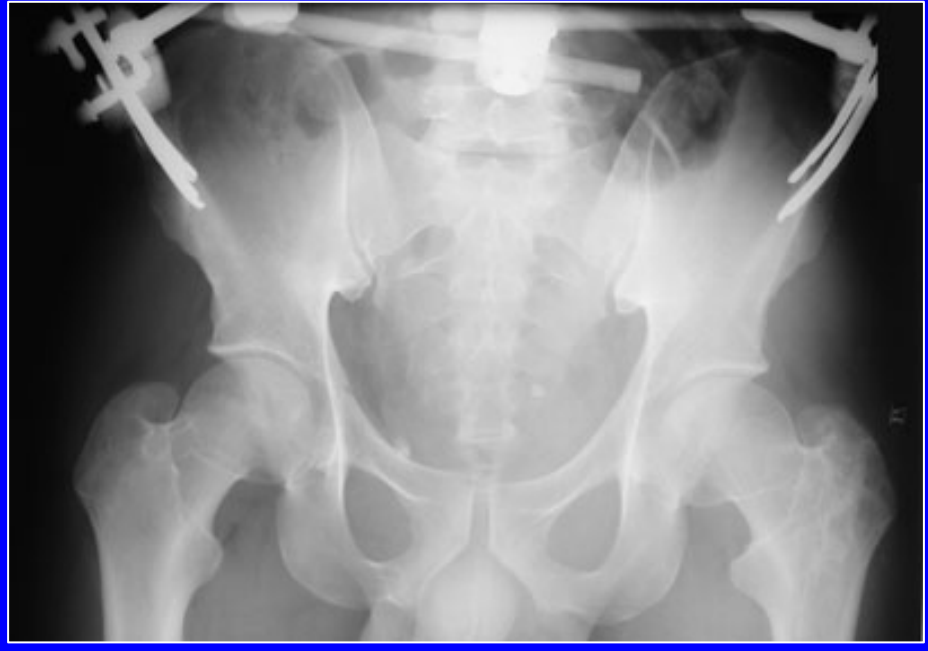


Fissatore esterno

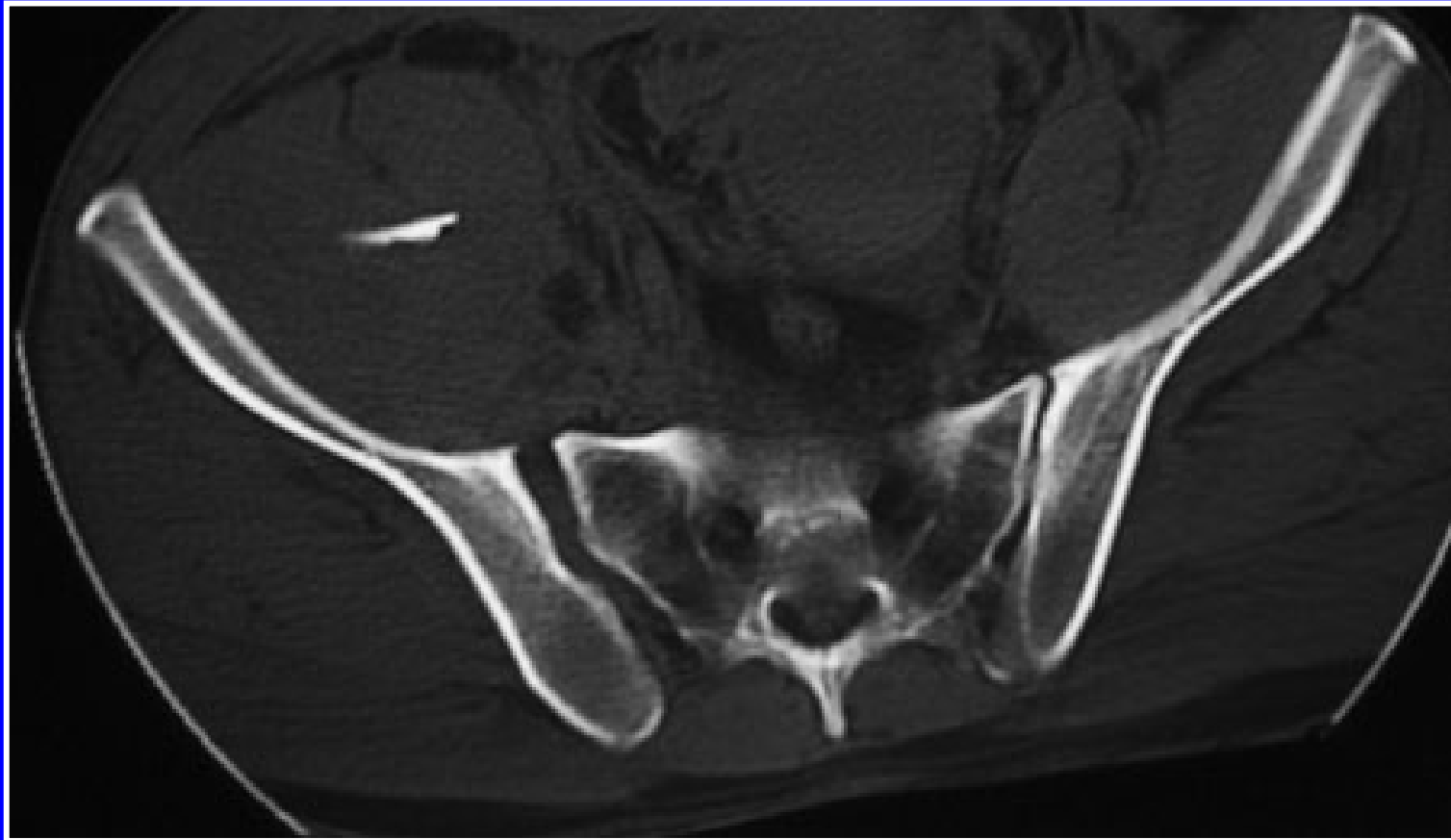


Disgiunzione instabile

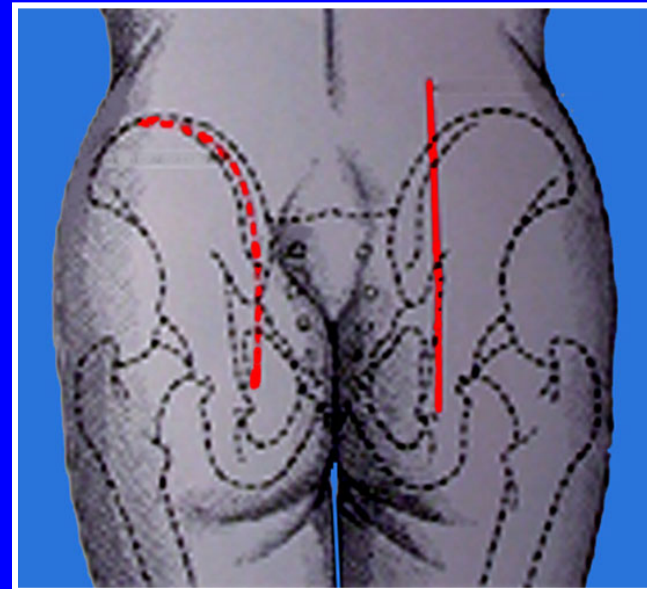
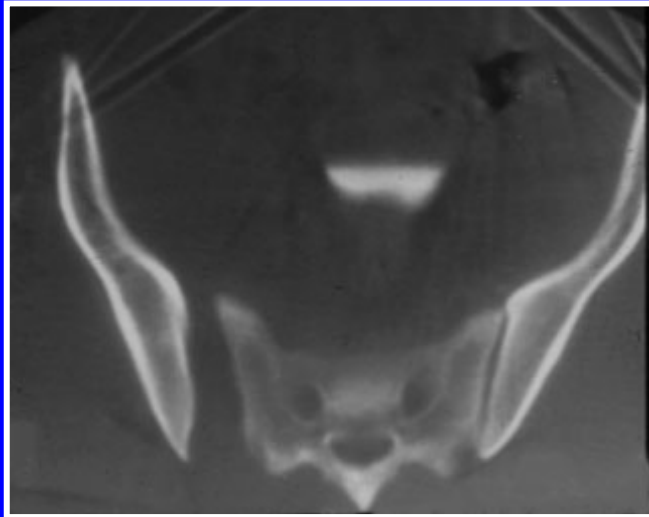




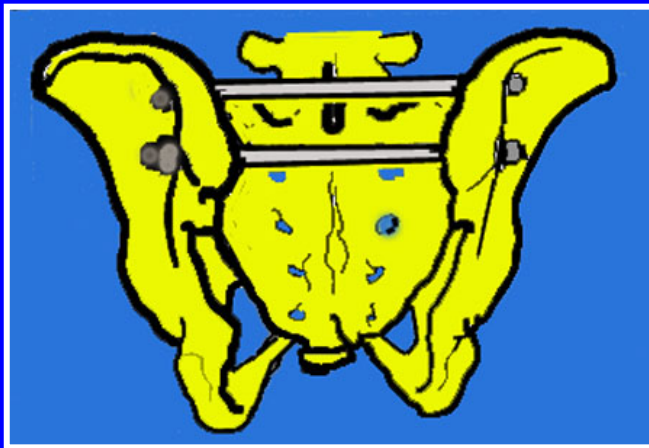
Apertura ant. e post. della sacroiliaca



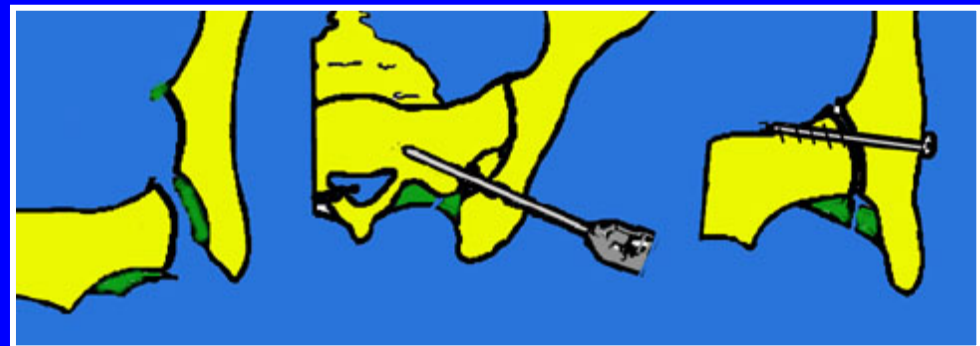
Trattamento chirurgico delle disgiunzioni sacro-iliache complete



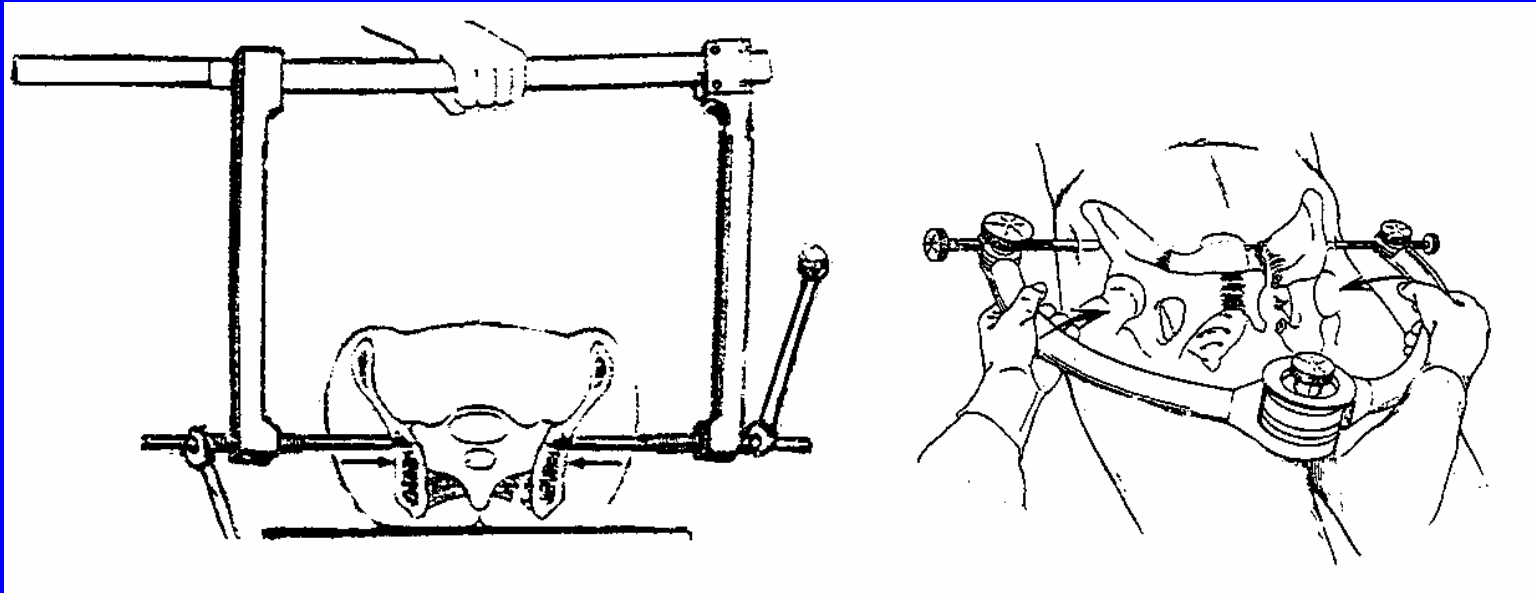
Via posteriore



Sintesi con bulloni trasversali



Avvitamento diretto o percutaneo(TAC)



Sequela



Disgiunzione inveterata (verticale con fratt. delle branche)

Sintesi con viti

